



Maine Highway Safety Facts 2016



2016 MAINE HIGHWAY SAFETY FACTS

The Bureau of Highway Safety and the Maine Department of Transportation are pleased to present the 2016 edition of Maine Highway Safety Facts. This publication provides Maine crash data facts through 2015 giving a view of traffic crashes and their factors. It can be a valuable tool in problem identification, safety education and community activities. Since it is intended to provide a general information overview, the data is presented in a very basic format. Trend lines reflect five-year annual averages. Topics covered represent the most frequently requested information. Data sources are from the Maine Fatal Analysis Reporting System (FARS) and MaineDOT's crash data system. Any comments or questions you may have about the information are welcome.

Contacts:

Lauren Stewart

Maine Bureau of Highway Safety
lauren.v.stewart@maine.gov
207.626.3841

Duane Brunell

Maine Department of Transportation
duane.brunell@maine.gov
207.624.3278



MaineDOT

themtsc.org



Table Of Contents

● Statewide Crash Overview

Maine Quick Crash Facts.....	4-5
Crashes and Crash Rates.....	6-7
Fatalities and Fatality Rates	8-9
Incapacitating Injuries.....	10
Snapshot Look at Focus Areas - Maine Top Crash Types.....	11
Crashes and Fatalities by Jurisdiction.....	12-13
Crashes and Fatalities by Federal Functional Class.....	14-15
Crashes and Fatalities by Type.....	16-17
Crashes and Fatalities by Month	18-19
Crashes and Fatalities by Day of Week	20-21
Crashes and Fatalities by Time of Day	22-23

● Road Settings

Lane Departure.....	24-25
Head-On.....	26-27
Went-Off-Road.....	28-29
Intersections.....	30-31
Road Surface Conditions.....	32
Fixed Object Struck.....	33

● Behavior

Driver Actions.....	34-35
Seat Belt Usage.....	36-37
Speed	38-39
Impaired.....	40-41
Distracted	42-43
Operating After Suspension	44
Fatalities by Selected Categories by Year	45

● Road User Groups

Crash and Fatality Rates by Driver Age	46-47
Younger Drivers.....	48-53
Mature Drivers.....	54-55
Bicyclists.....	56-57
Pedestrians.....	58-59

● Special Vehicle Classes

Large Trucks and Commercial Vehicles	60-63
Motorcycles.....	64-65

● Large Animals (Deer and Moose)

Crashes and Fatalities	66-67
Crashes by County.....	68
Crashes by Month.....	69
Crashes by Light Condition.....	70-71

Maine Quick Crash Facts

Facts based on average annual experience from 2011-2015

Motor vehicle crashes occurred with the following average frequency:

- One fatal crash **every 60 hours**
- One personal injury crash **every 56 minutes**
- One property-damage only crash **every 24 minutes**
- One reportable traffic crash **every 17 minutes**

There were 30,482 traffic crashes on Maine public roads involving:

- 48,158** vehicles
- 63,836** vehicle occupants (drivers and passengers)
- 297** pedestrians
- 212** bicyclists
- 17** ATV's
- 7** snowmobiles

Nearly **15 billion** vehicle miles were traveled within the State of Maine.



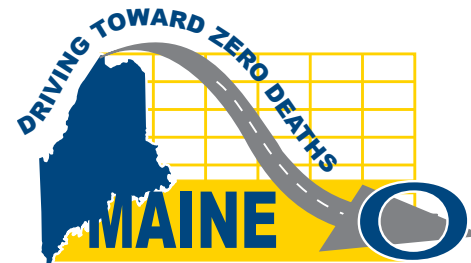
146 people were killed in traffic crashes. **37** of those deaths were the result of drinking and driving.

21% of Maine's crash fatalities occur between **9pm** and **2am**, even though there is very low traffic volume at this time.

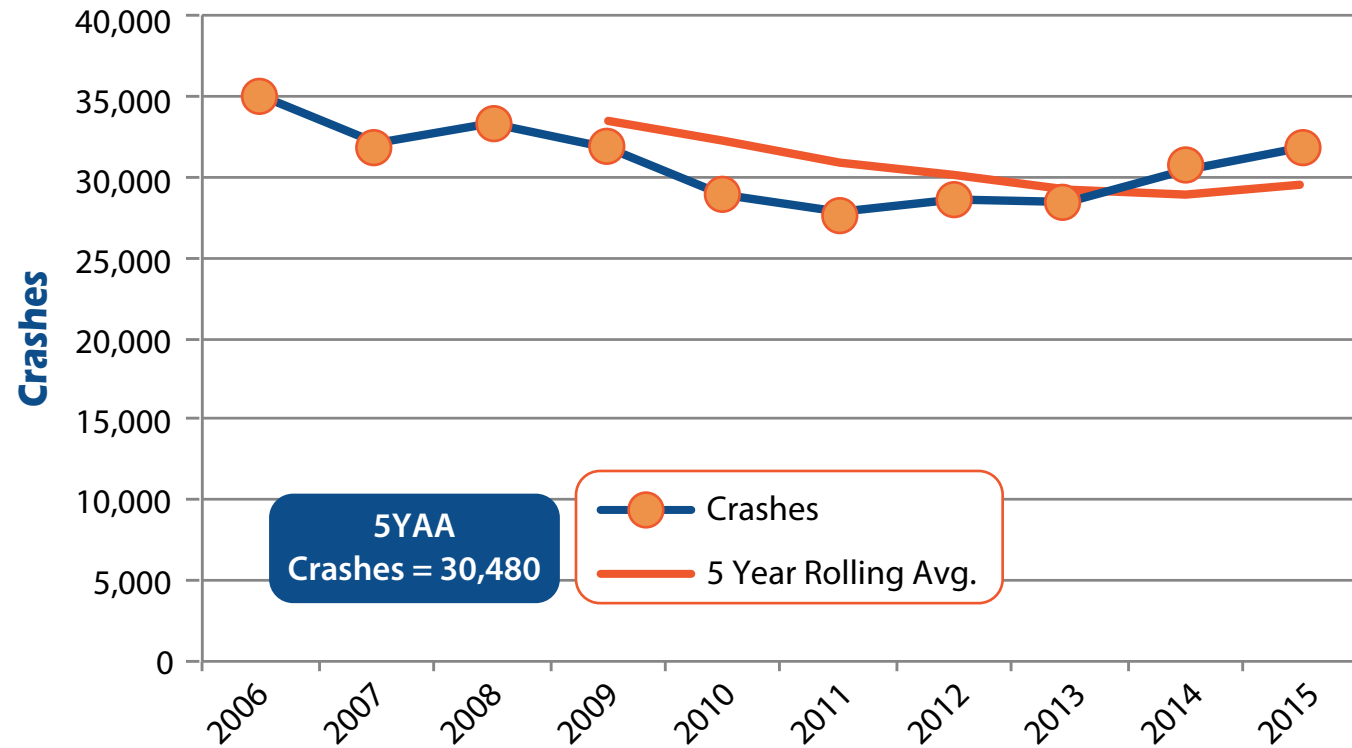
Collisions involved **42,361** Maine drivers and **3,877** out-of-state drivers.

8,229 injury crashes

130 fatal crashes



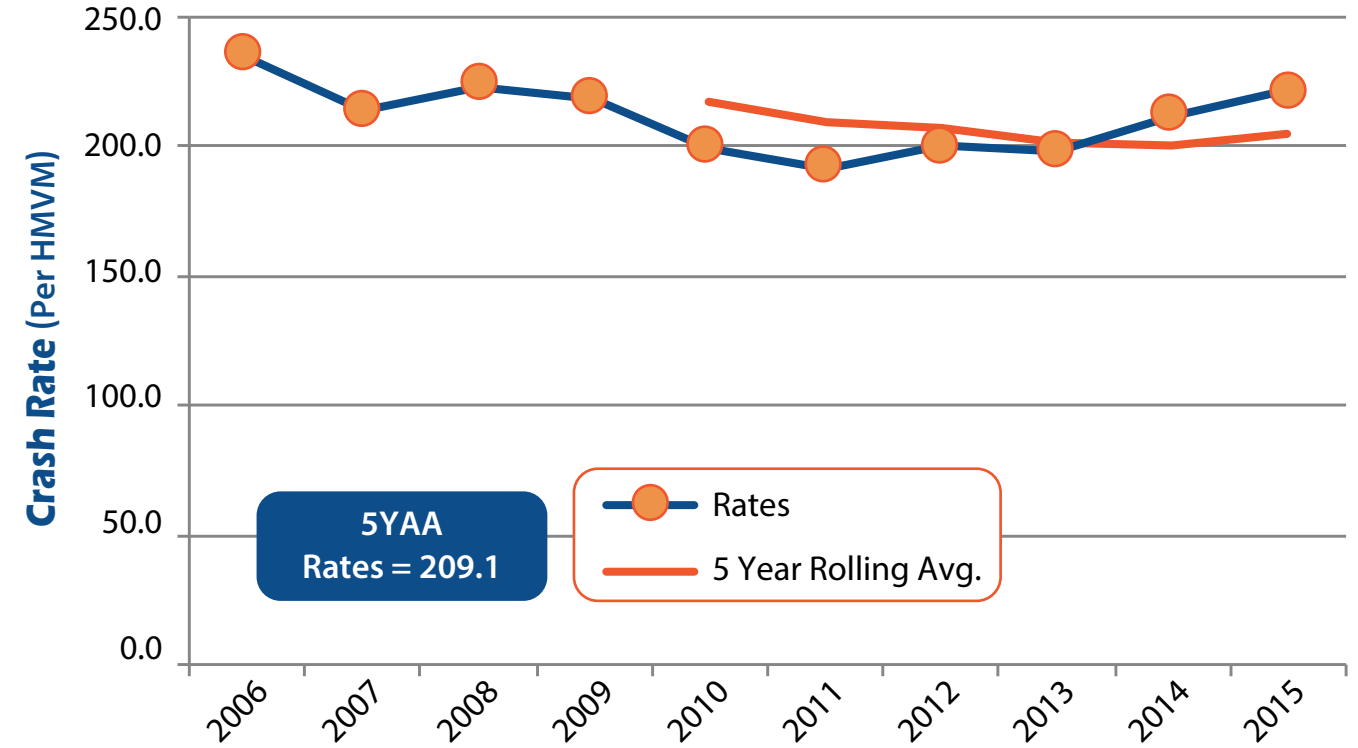
Maine Crashes



6

Total reportable crashes on Maine's public roads.

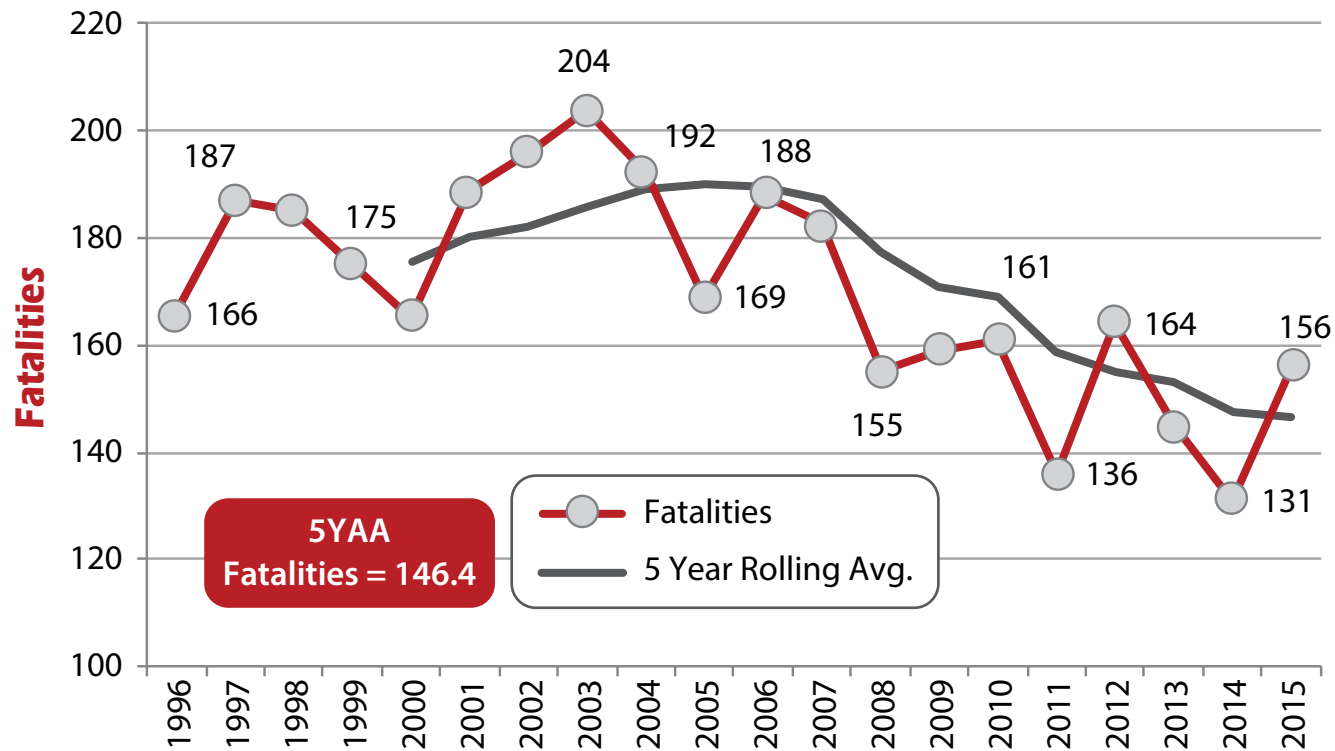
Maine Crash Rates



7

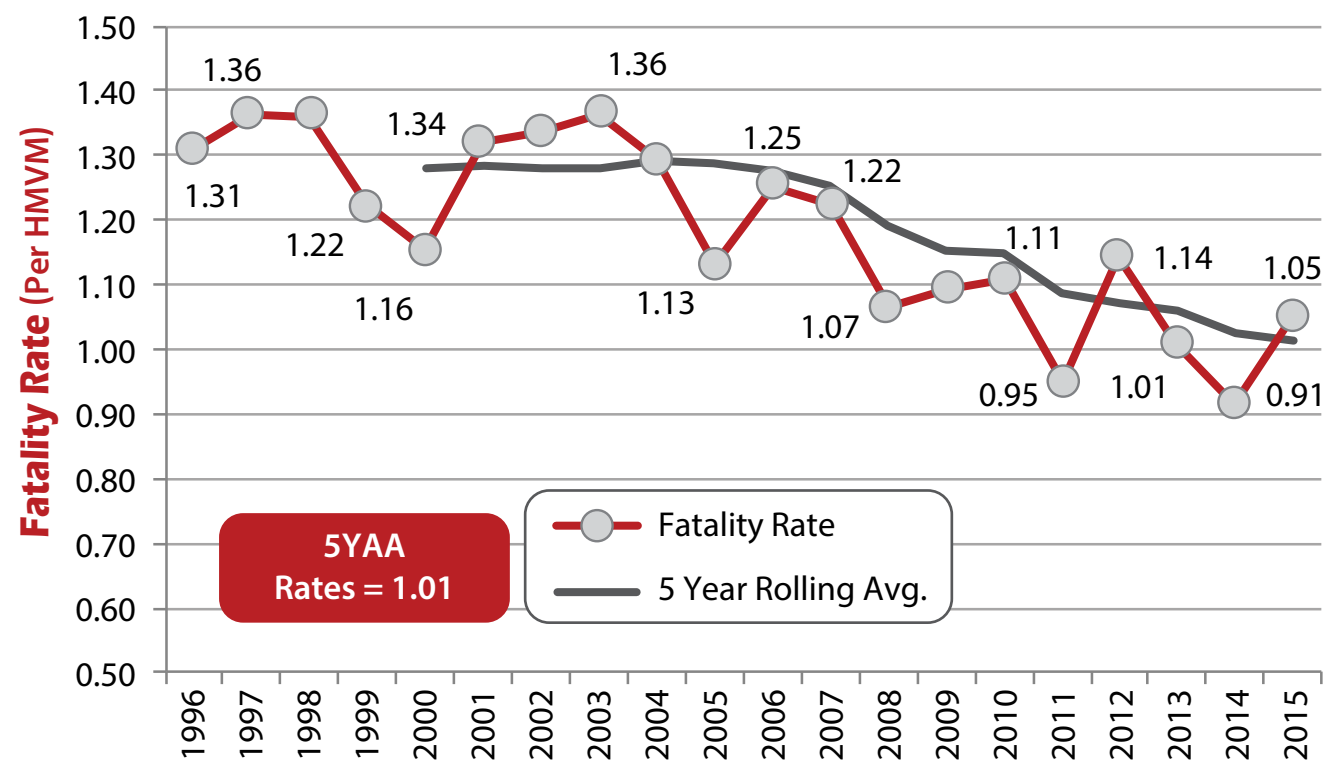
Crashes per estimated hundred million vehicle miles traveled.

Maine Annual Fatalities



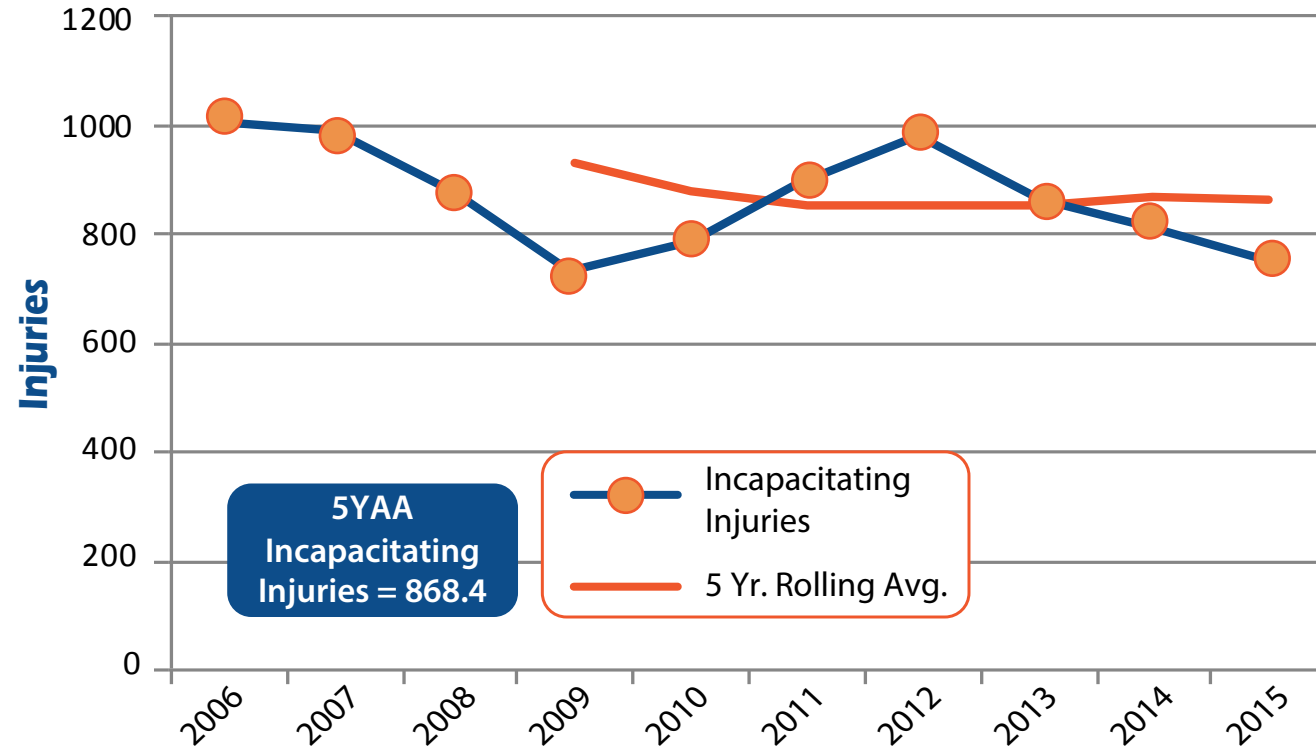
8 *Maine fatalities as identified in Fatal Analysis Reporting System (www.nhtsa.gov/FARS)*

Maine Fatality Rates



9 *Fatalities per estimated hundred million vehicle miles traveled.*

Maine Incapacitating Injury Outcomes



SNAPSHOT LOOK AT FOCUS AREAS

Maine Top Crash Types Based On Annual Average Of Last 5 Years' Experience (2011-2015)			2006-2010 Experience		
LEAD FOCUS AREAS	5 Year Average	5 Year Average	Severity Comparison	5 Year Average	
	Annual Crashes (2011-2015)	Annual Fatalities (2011-2015)		Annual Crashes (2006-2010)	Annual Fatalities (2006-2010)
All Crash Types	30,482	146.4	4.8	30,750	169.2
Lane Departure	9,177	99.2	10.8	8,727	118.8
Speed	4,449	59	13.3	5,670	67.6
Unbelted		55.6			55.4
16-18 Year Old	2,943	11.4	3.9	3,334	14.8
16-20 Year Old	5,330	18.2	3.4	6,597	27.2
21-24 Year Old	4,551	20.2	4.4	4,587	24.4
Alcohol	1,197	37.6	31.4	1,566	55.0
*Distracted/Inattentive	3,092	12.75	4.1	11,348	42.6
65-98 Year Old	5,335	35.4	6.6	5,010	33.1
Motorcycles	577	19	32.9	624	20.6
Winter	6,030	15	2.5	6,215	16.4
Intersections	8,732	17.4	2.0	9,058	21.6
Large Trucks	518	5.2	10.0	749	12
Pedestrians	297	11.8	39.7	249	12.2
Moose	365	0.8	2.2	561	2.2
Bicycles	208	1.4	6.7	192	2.0

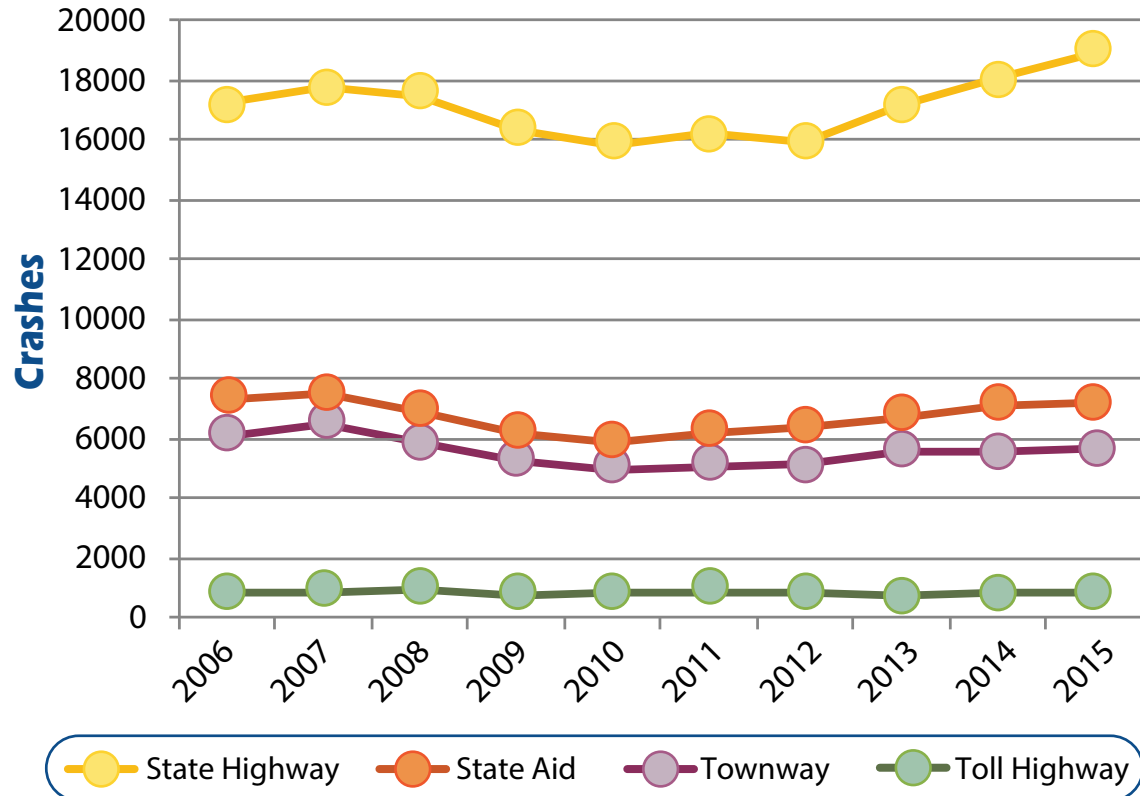
Overall results from 2011-2015 (white) have shown improvement over the earlier five-year study period of 2006-2010 (blue).

Severity comparison (orange column) shows relative potential for a fatal outcome - the higher the number, the higher the chance of a fatality in that crash type.

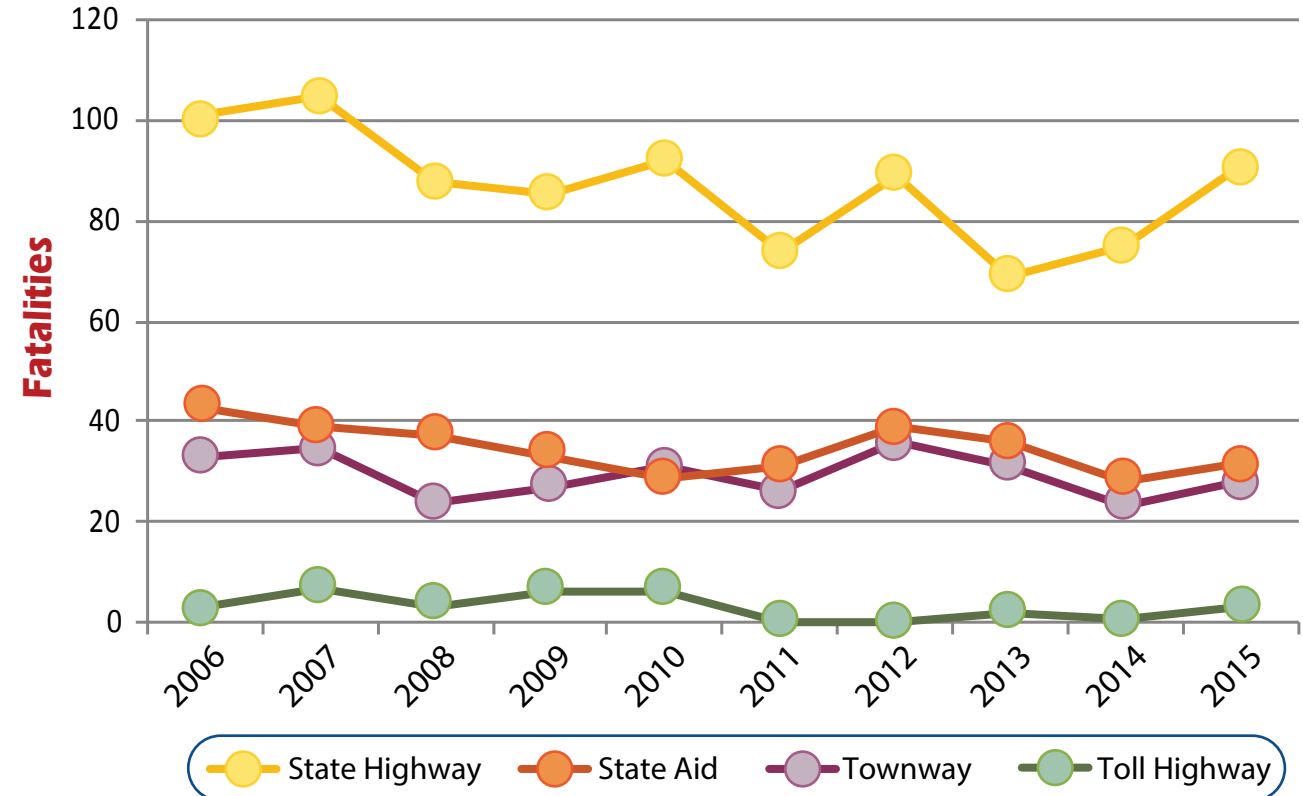
***NOTE:** The significant variance in this area is due to the 2011 Maine Crash Reporting System (MCRS) change in distracted driving reporting definition. Distracted driving results are for 2012-2015.

Miles of Road 2015	
State Highway	4,083
State Aid	4,267
Townway	13,457
Toll Highway	112
(not including seasonal)	
100 Million Vehicle Miles Traveled 2015	
State Highway	86.0
State Aid	28.6
Townway	18.5
Toll Highway	14.5

Crashes by Road Jurisdiction

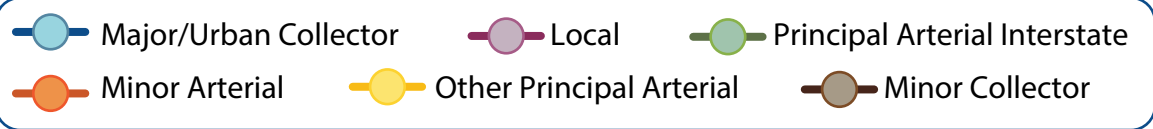
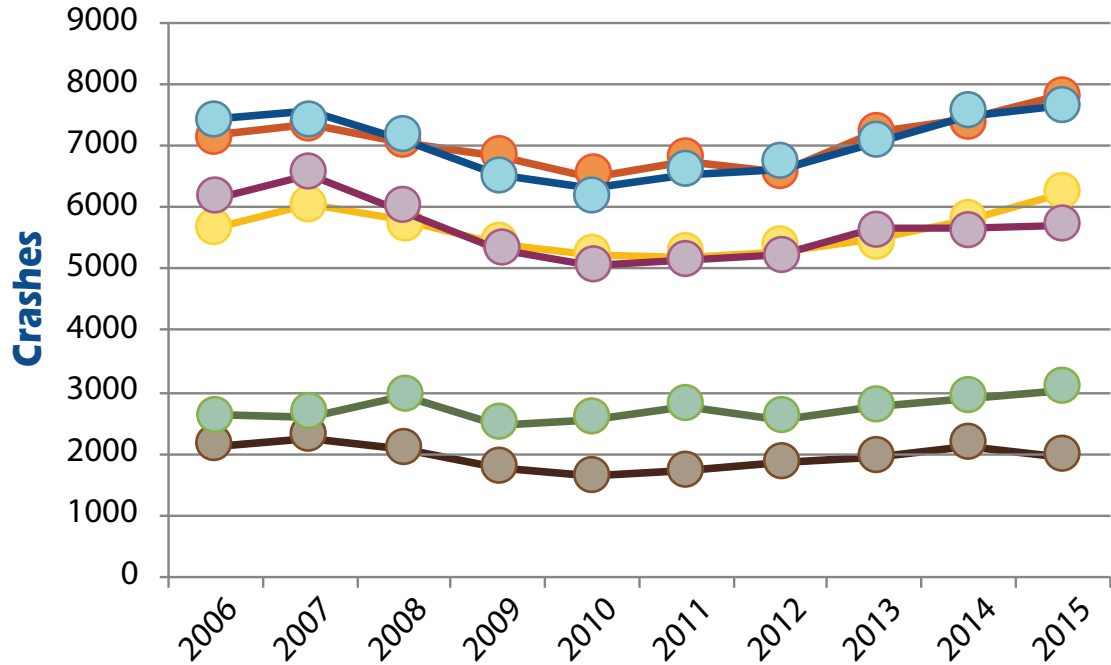


Fatalities by Road Jurisdiction

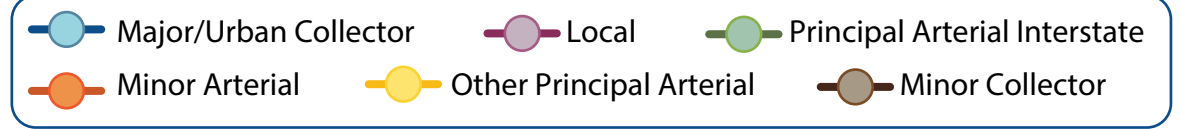
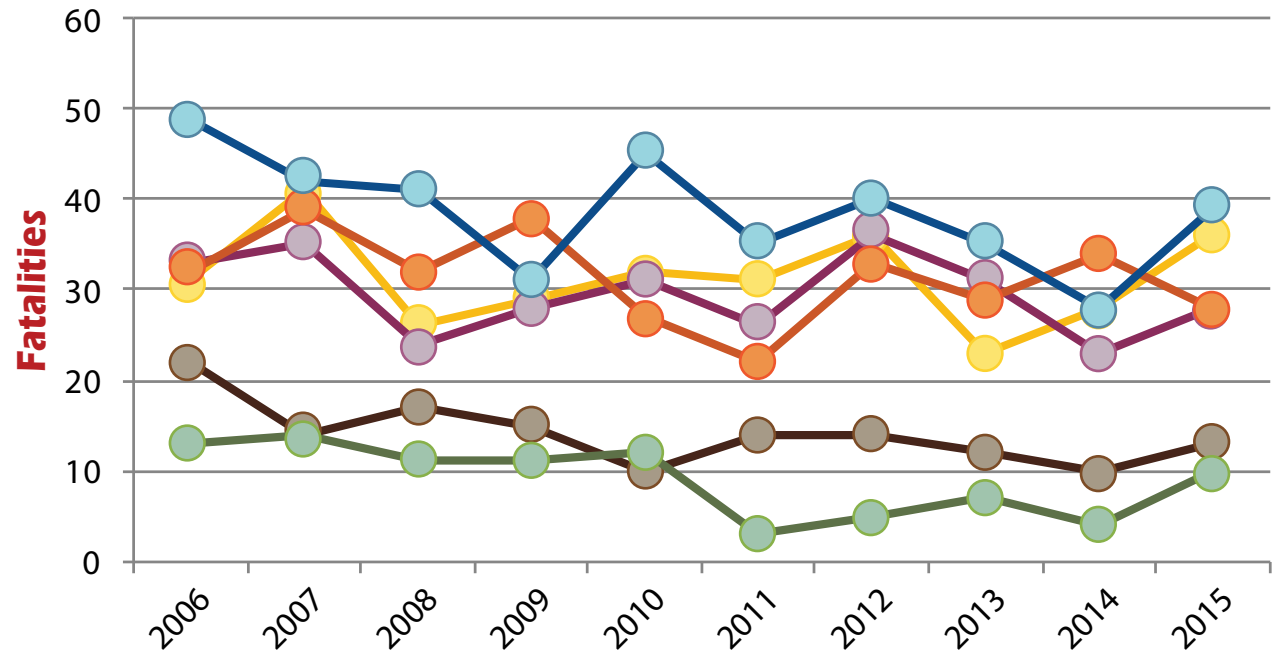


Miles of Road	
Major/Urban Collector	3,800
Minor Arterial	1,188
Local	13,456
Other Principal Arterial	923
Principal Arterial Interstate	365
Minor Collector	2,167
100 Million Vehicle Miles Traveled	
Major/Urban Collector	32.3
Minor Arterial	27.6
Local	18.5
Other Principal Arterial	25.7
Principal Arterial Interstate	33.2
Minor Collector	8.7

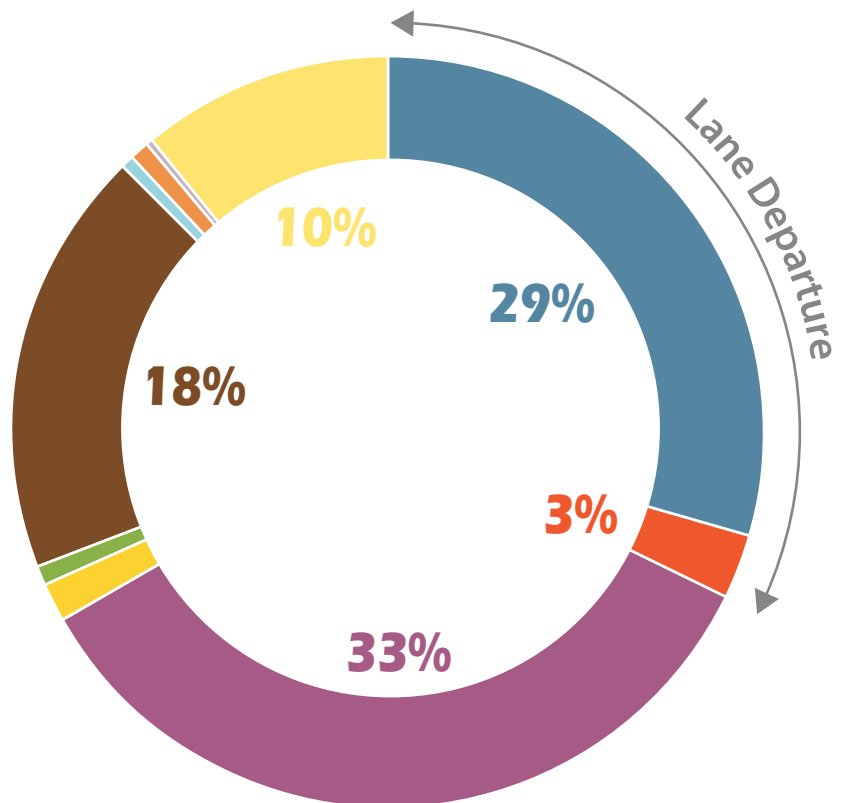
Crashes by Federal Functional Class



Fatalities by Federal Functional Class

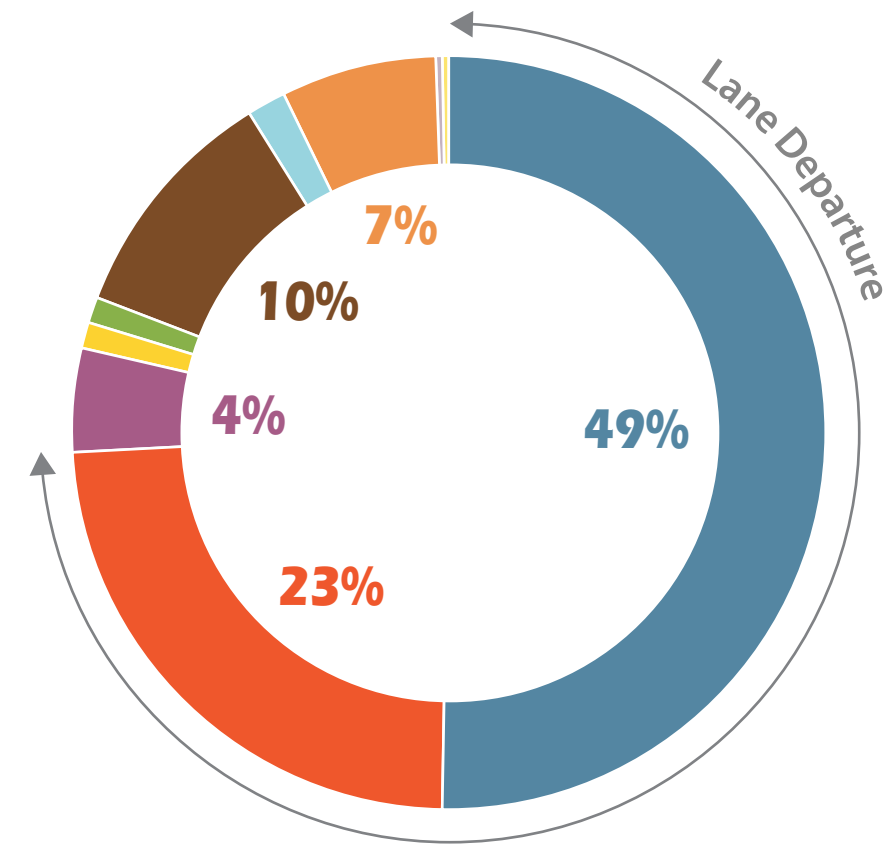


Maine Crashes by Type (2006-2015)



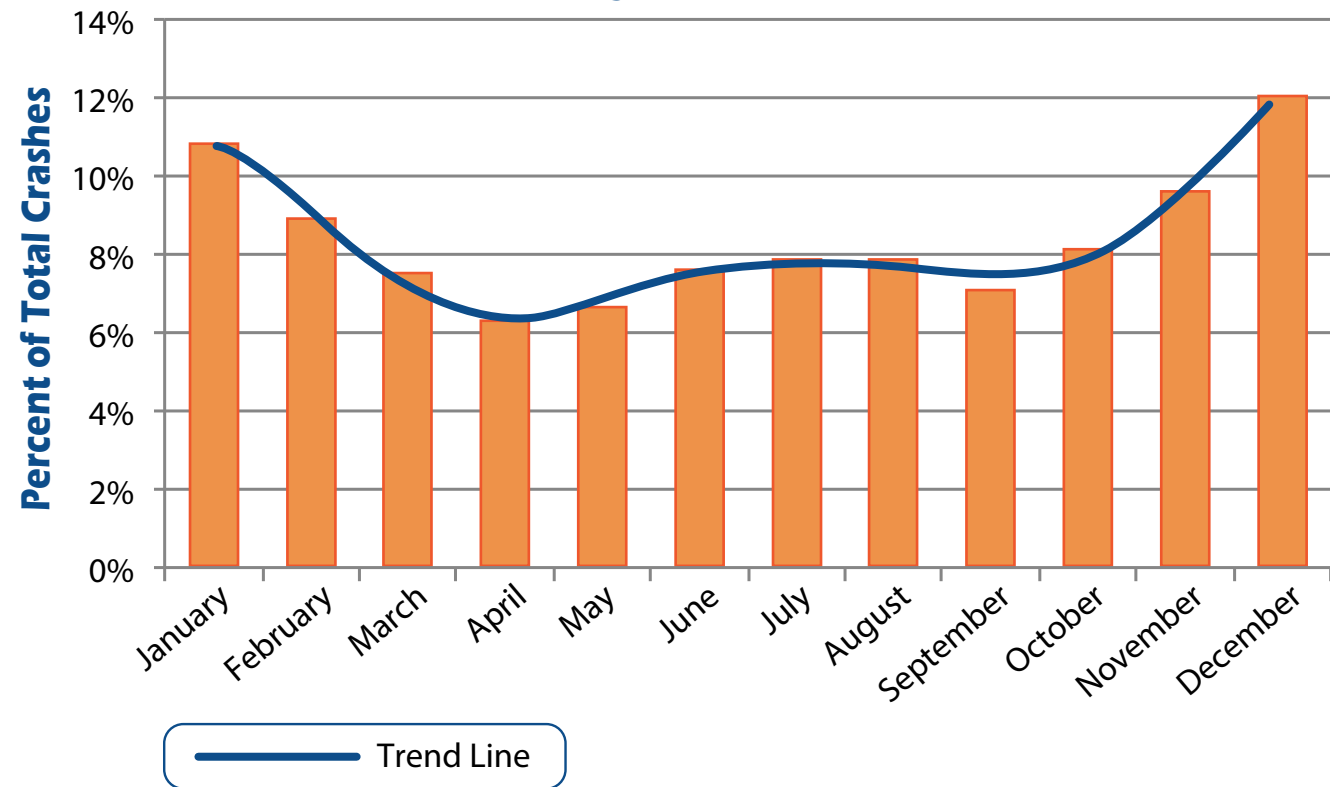
- Went-Off-Road
- Head-On
- Rear-End
- Moose
- Bicycle
- Intersection
- Rollover
- Pedestrians
- All Other Animals
- Deer

Maine Fatalities by Type (2006-2015)

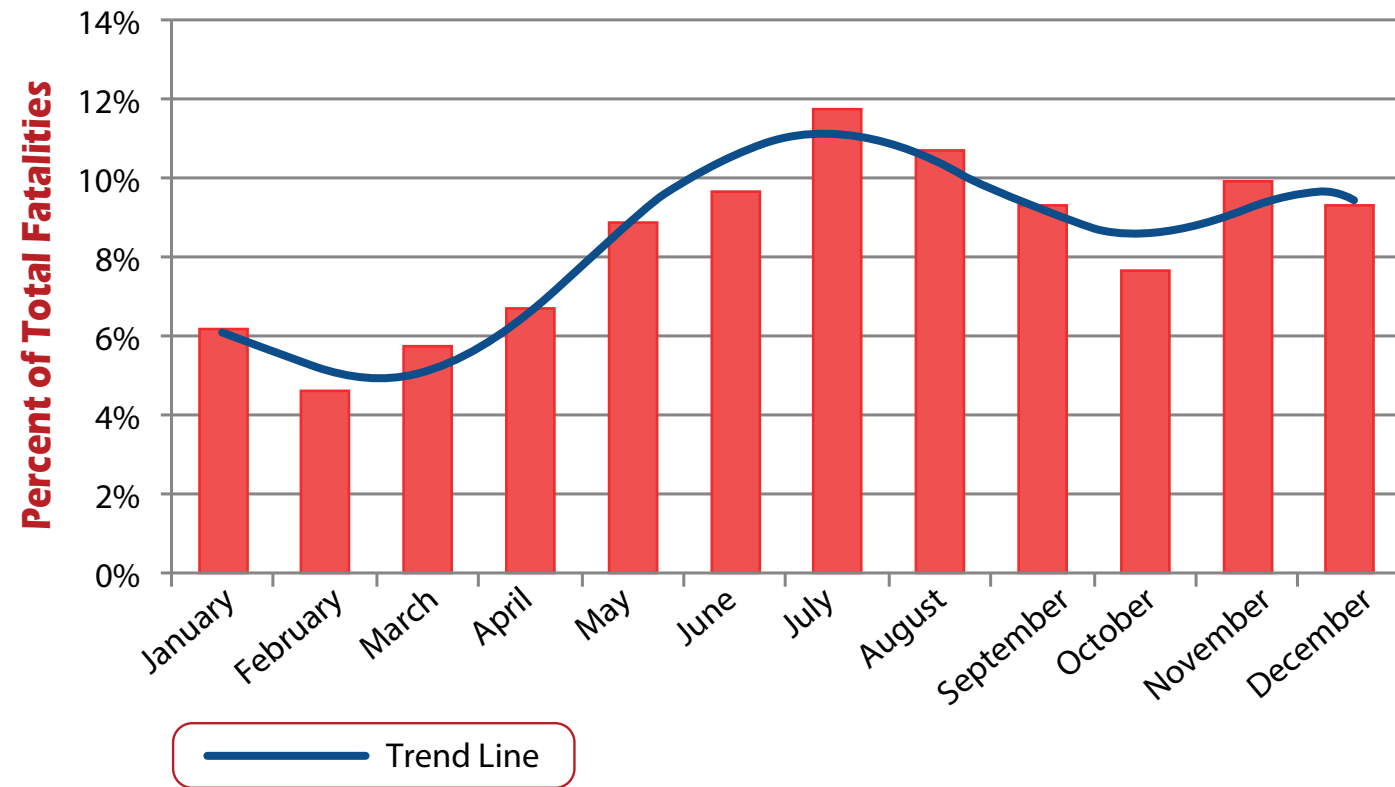


- Went-Off-Road
- Head-On
- Rear-End
- Moose
- Bicycle
- Intersection
- Rollover
- Pedestrians
- All Other Animals
- Deer
- Fire

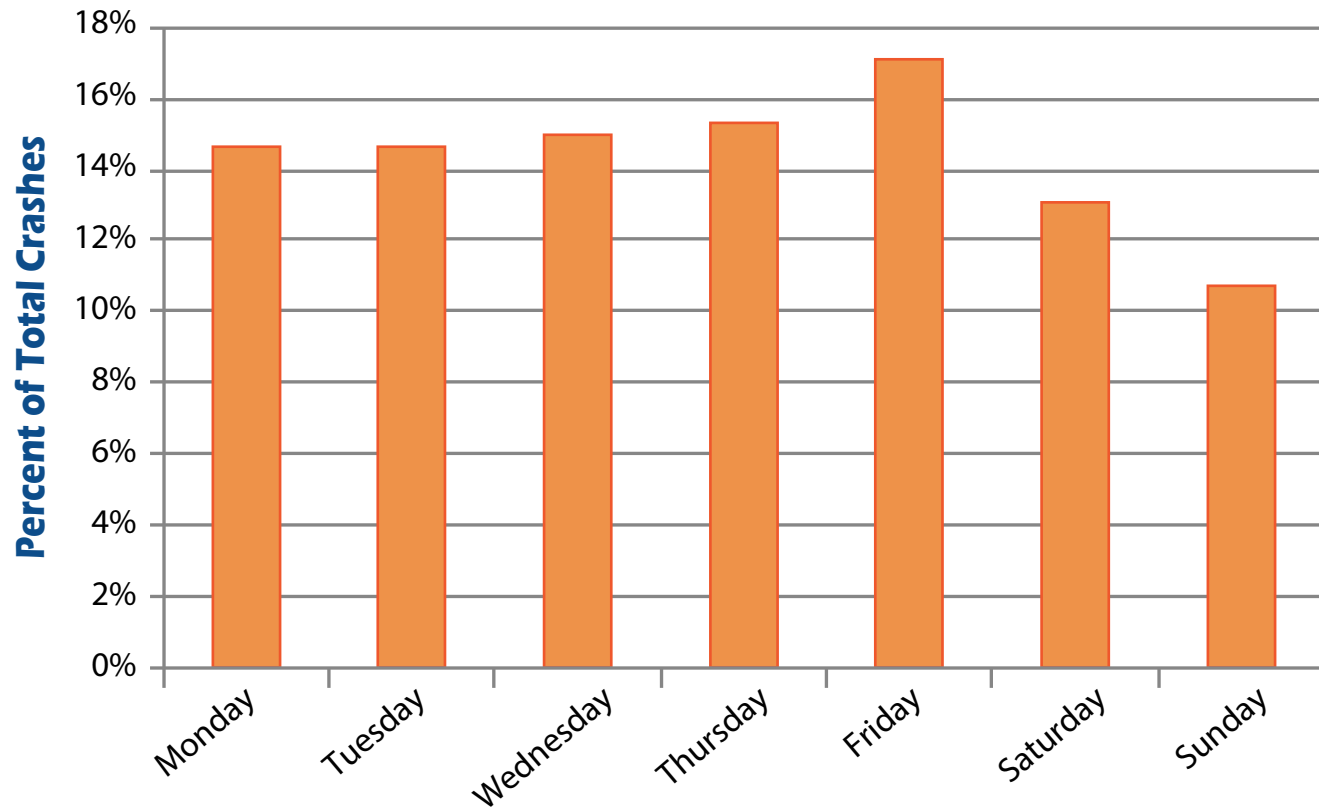
Crashes by Month (2006-2015)



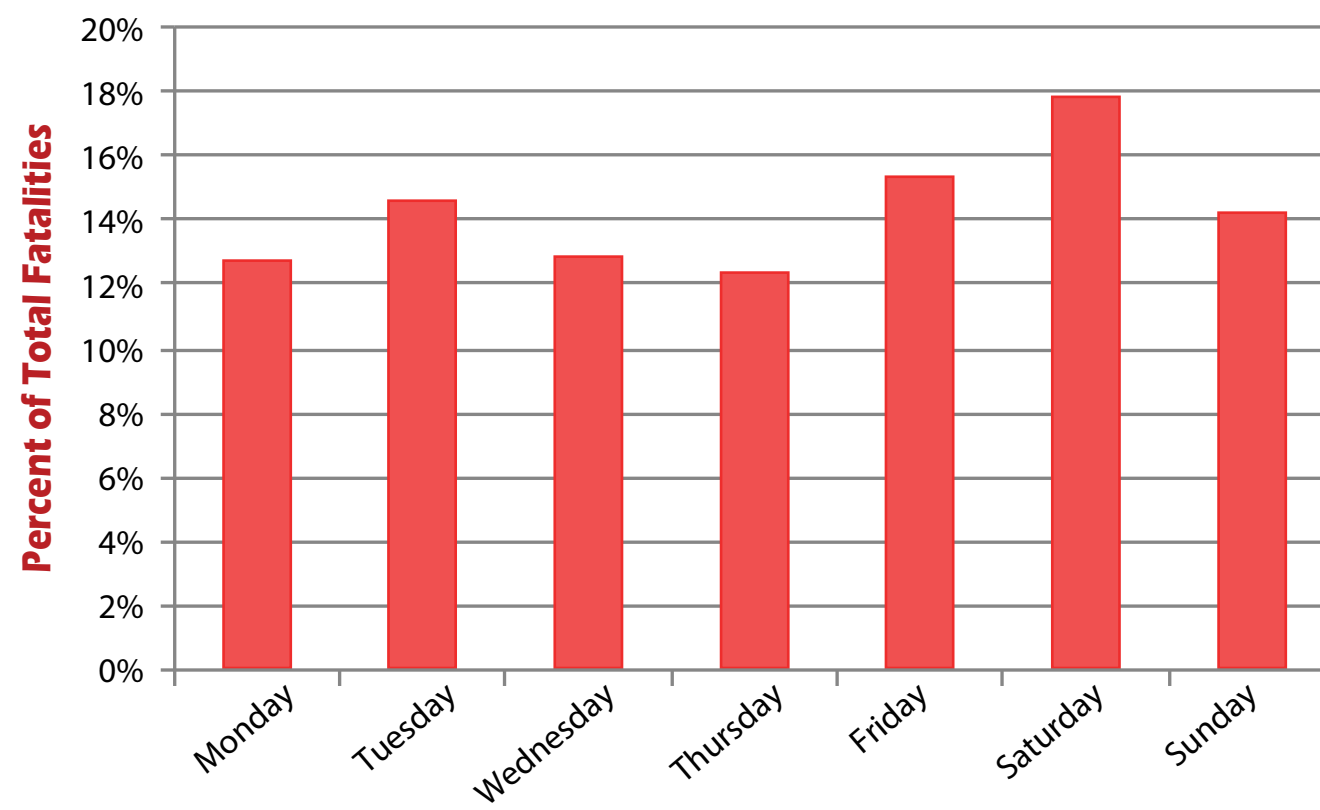
Fatalities by Month (2006-2015)



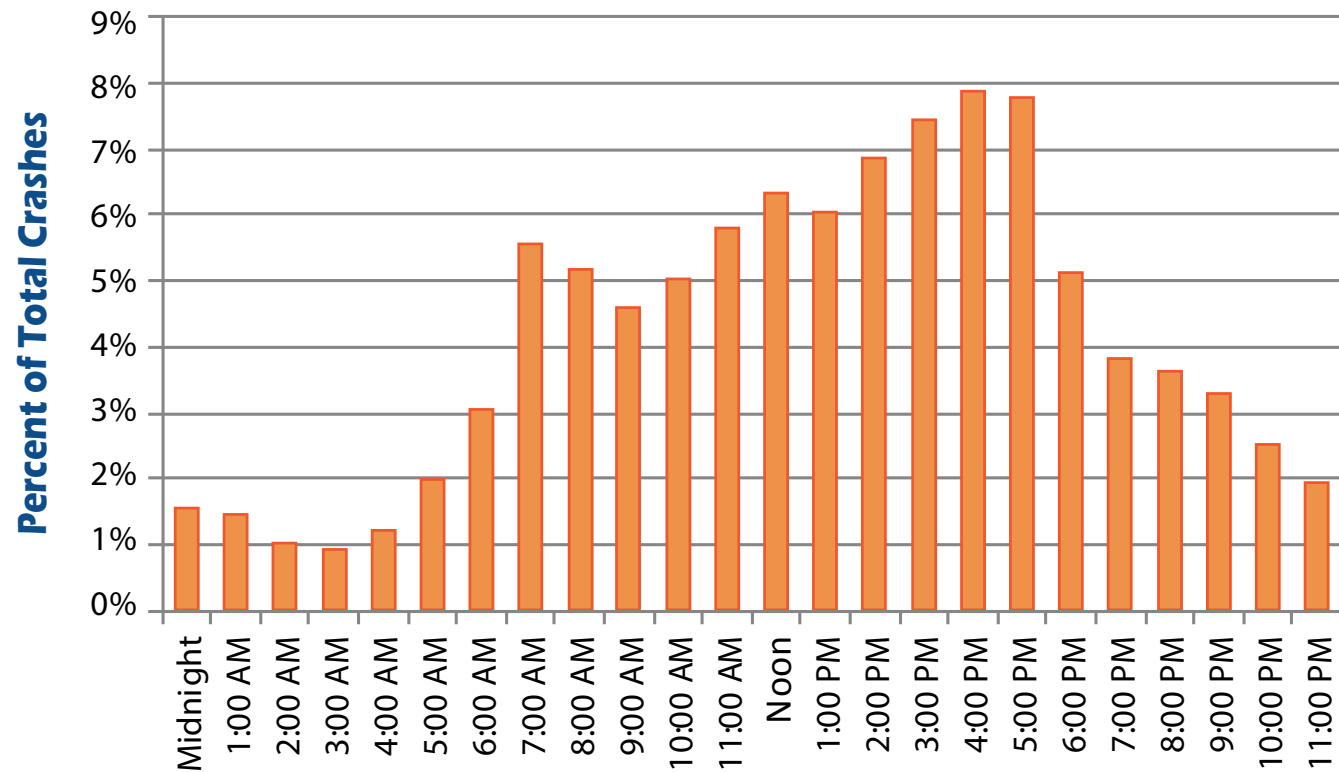
Crashes by Day of the Week (2006-2015)



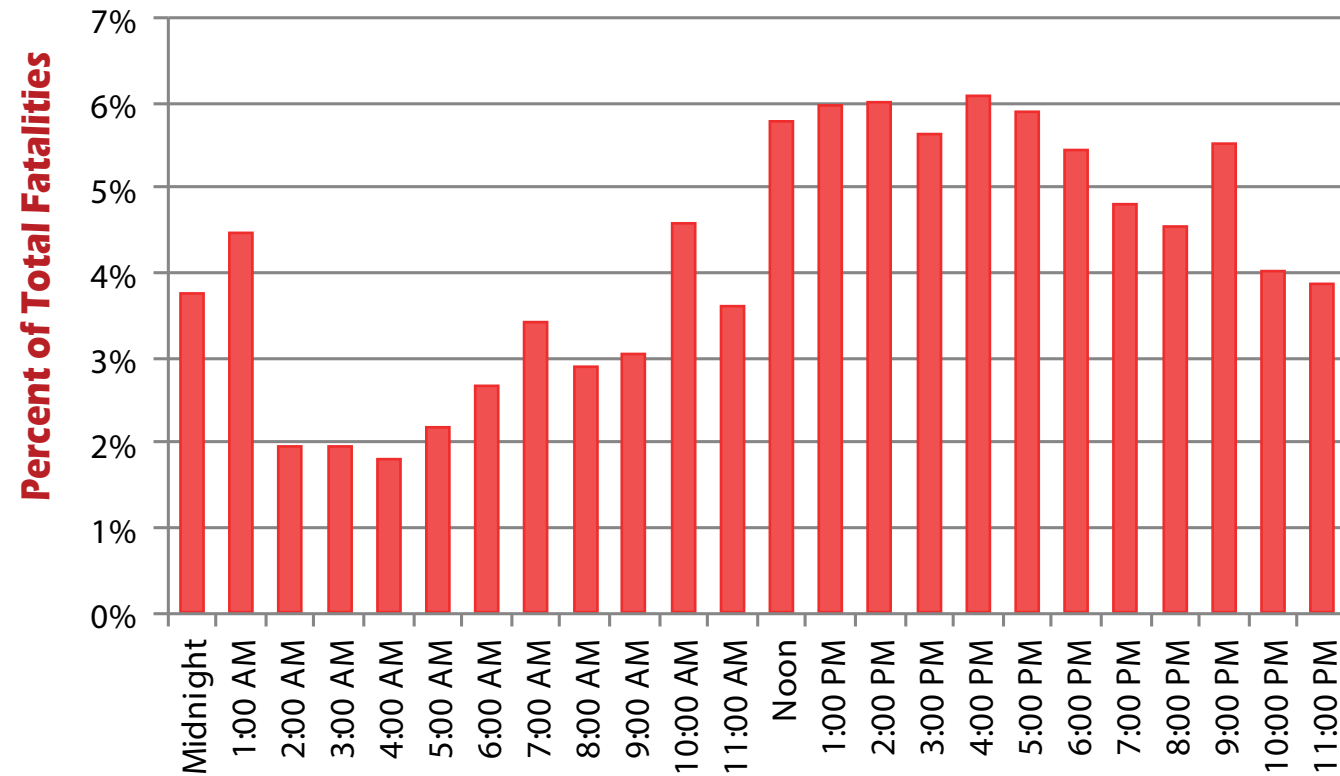
Fatalities by Day of the Week (2006-2015)



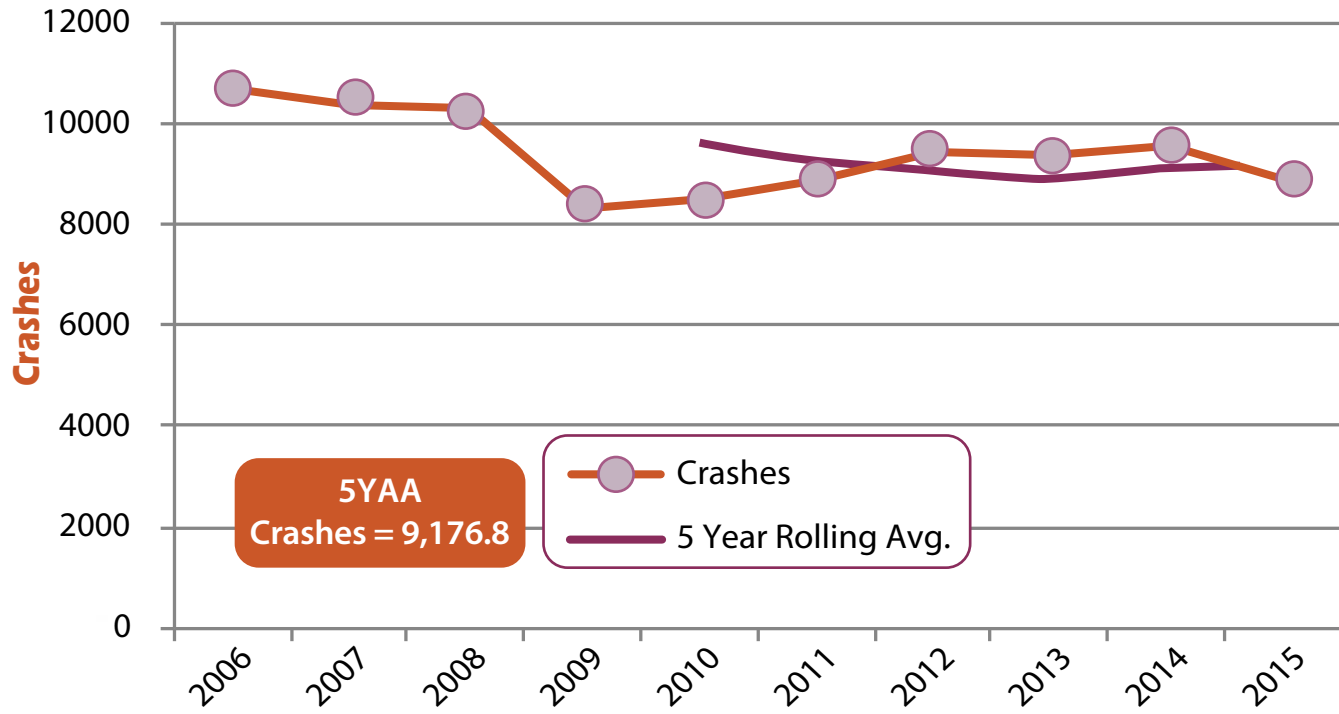
Crashes by Time of Day (2006-2015)



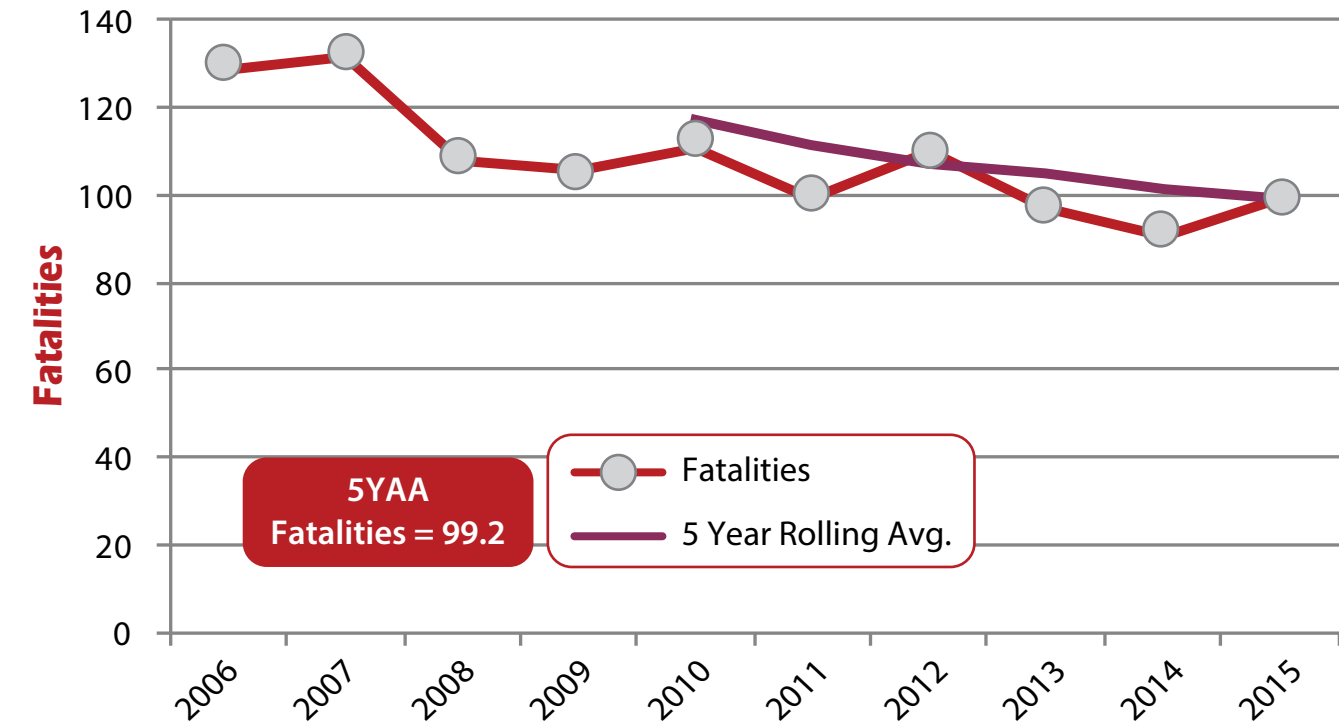
Fatalities by Time of Day (2006-2015)



Lane Departure Crashes

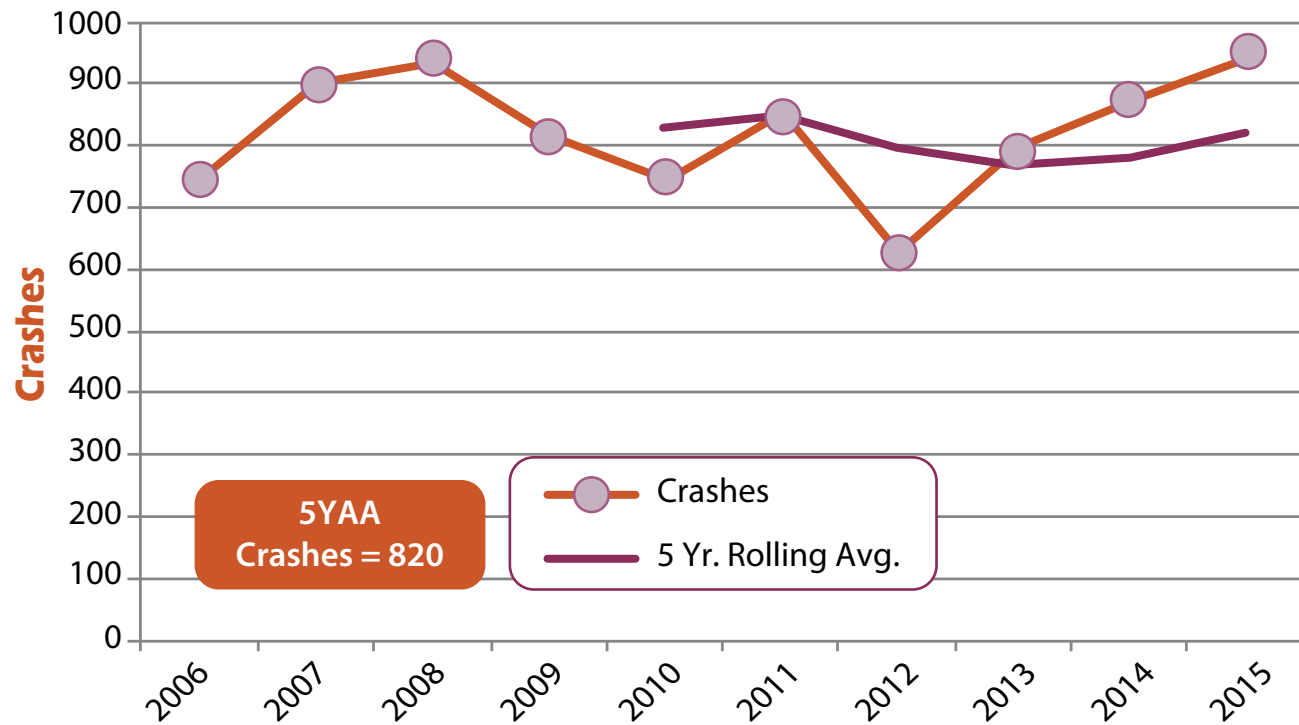


Lane Departure Fatalities

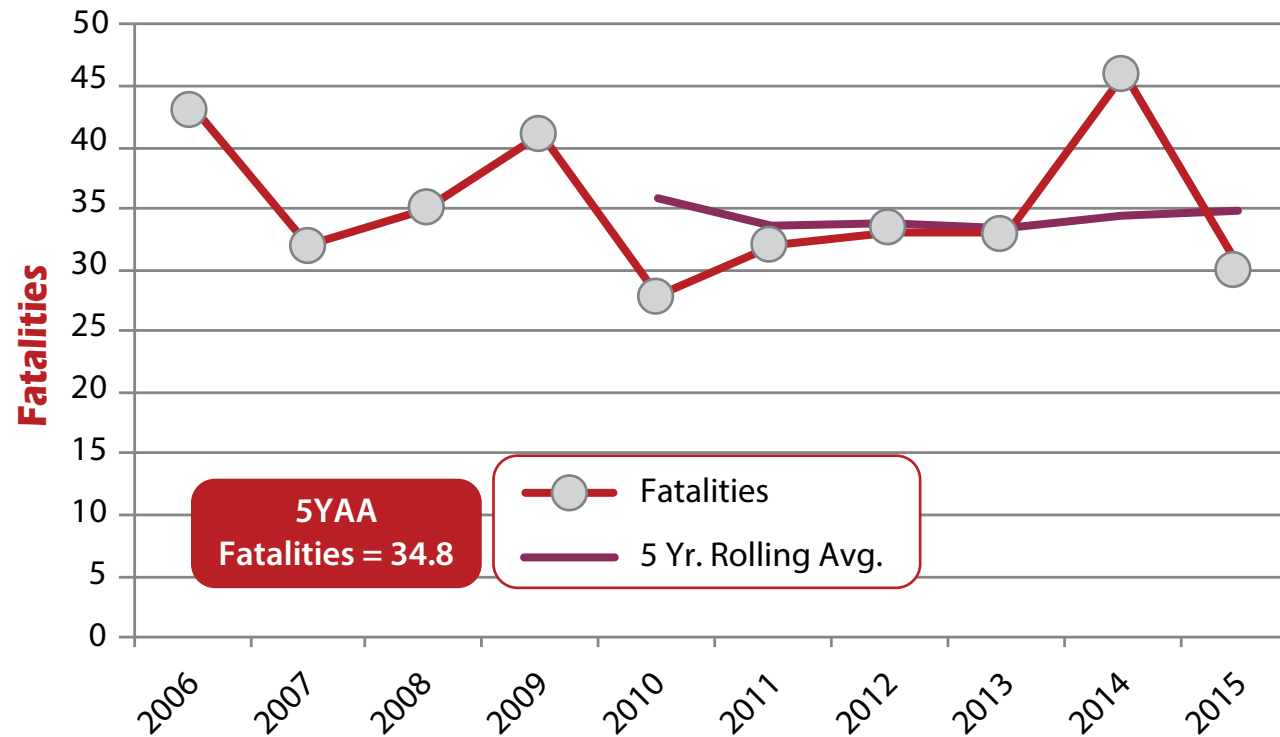


Lane departure crashes result when a vehicle leaves its designated lane of travel and veers left or right. Two crash types will normally result- either head-on or went-off-road. Those two crash types are further detailed on the following pages.

Head-On Crashes

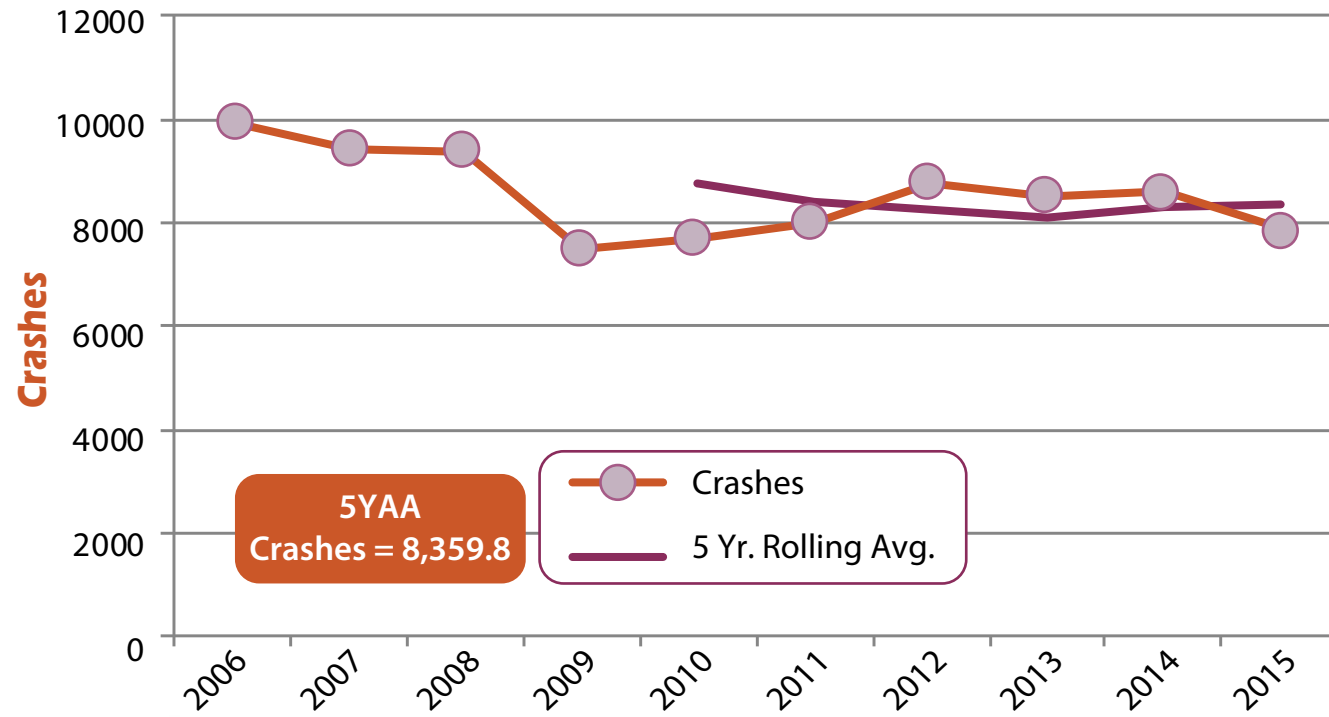


Head-On Fatalities

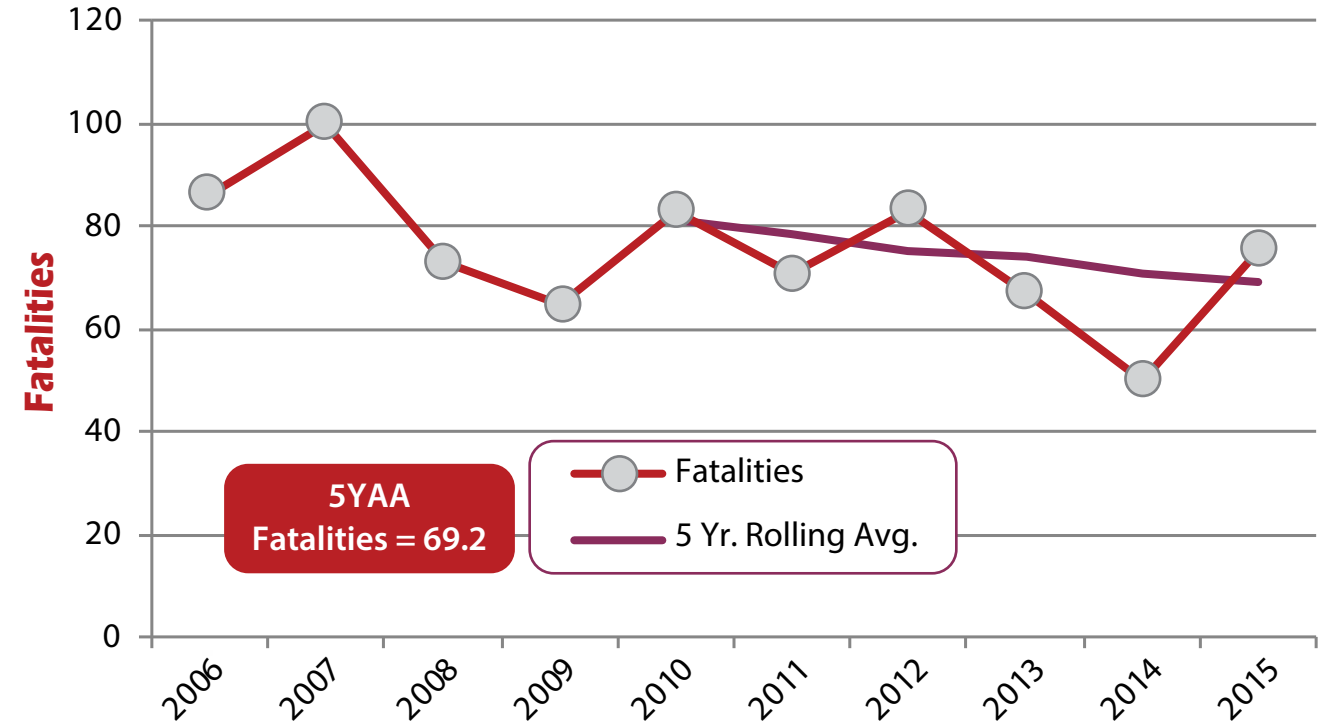


Head-on crashes are much more severe than went-off-road. There is an average of 42 fatalities/1,000 crashes for head-on compared to 8.3 fatalities/1,000 crashes in went-off-road crashes.

Went-Off-Road Crashes

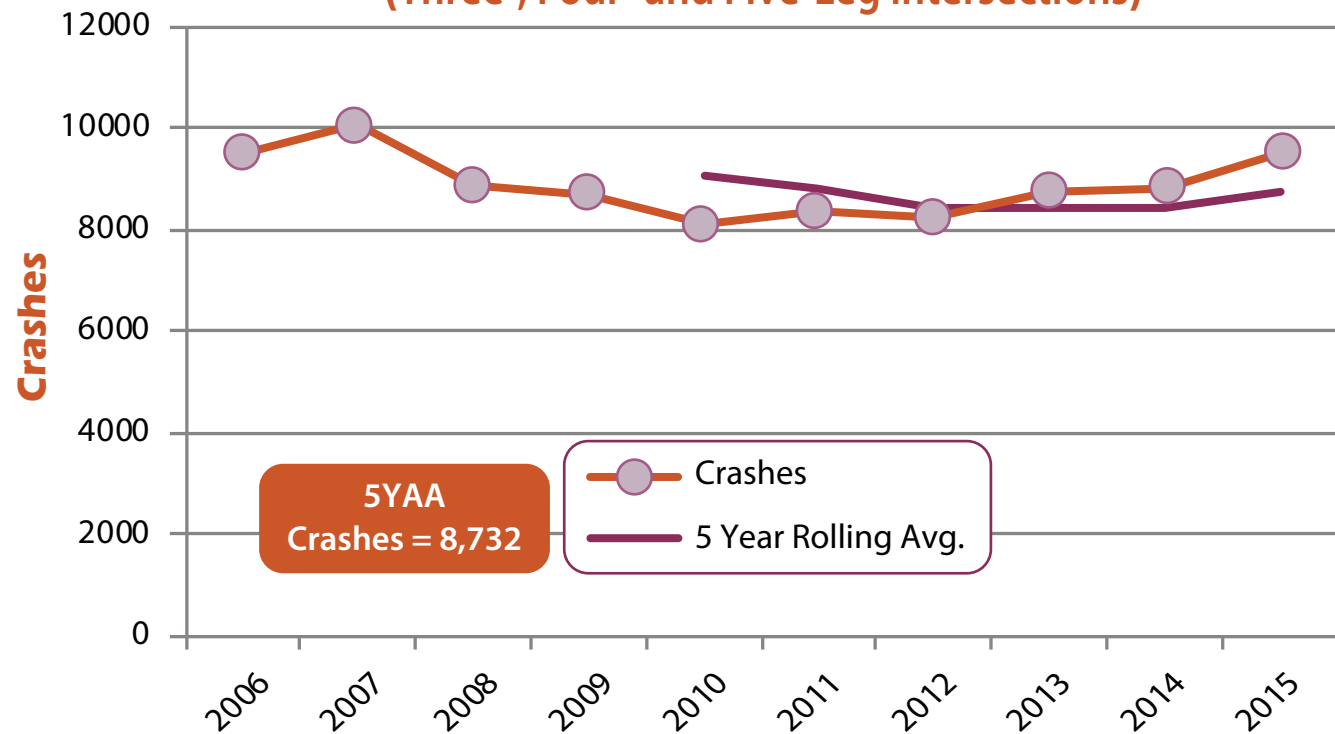


Went-Off-Road Fatalities

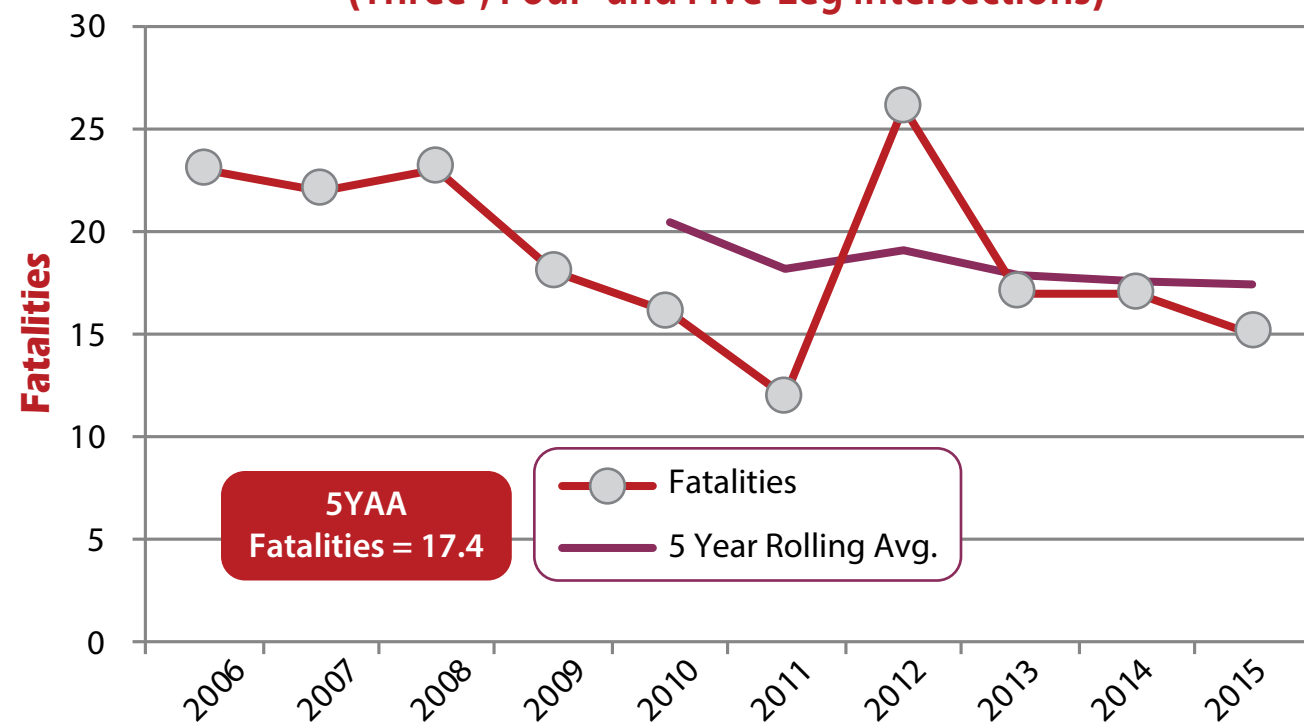


Went-off-road crashes are more frequent than head-on, occurring 10 times more often.

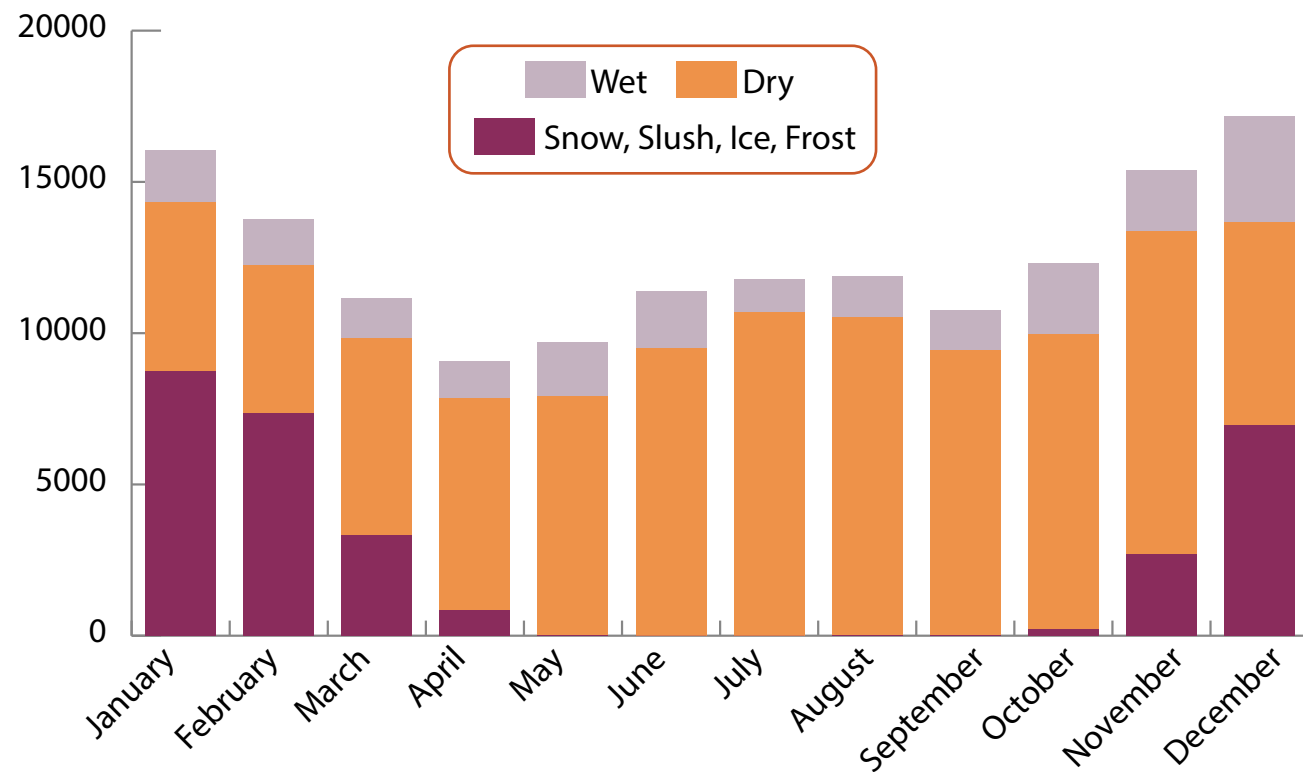
Intersection Crashes (Three-, Four- and Five-Leg Intersections)



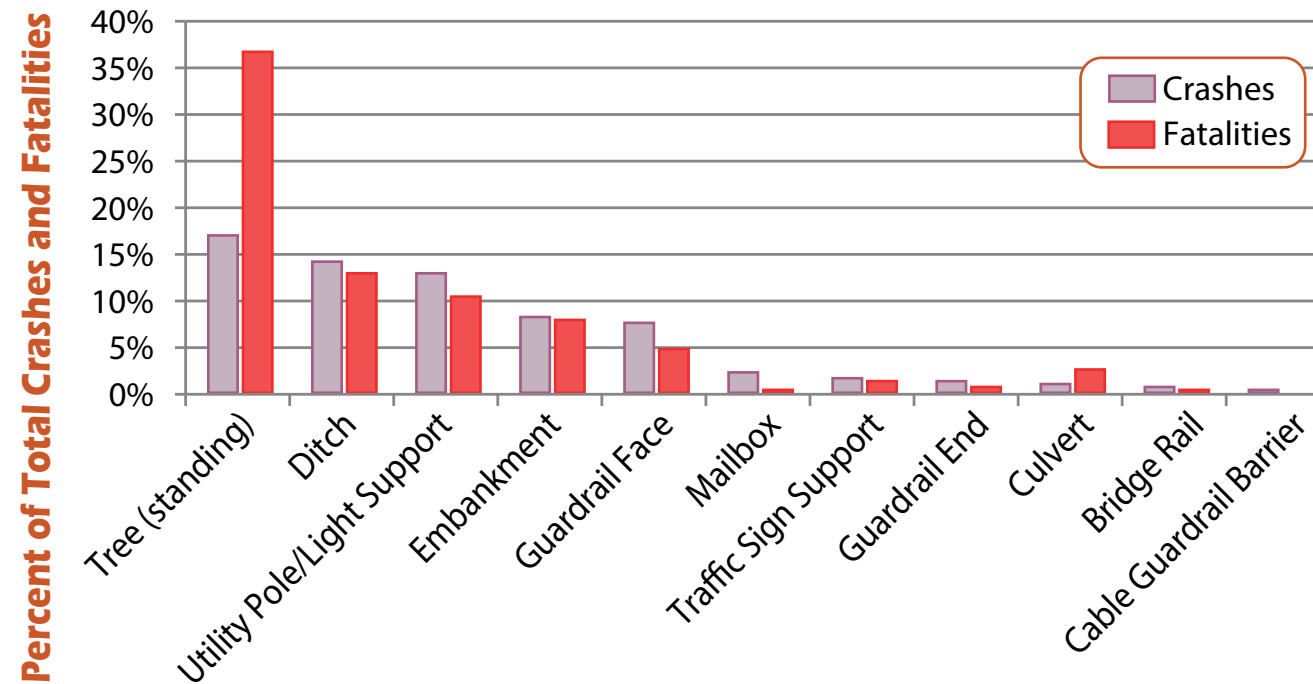
Intersection Fatalities (Three-, Four- and Five-Leg Intersections)



Maine Crashes by Road Surface Condition (2011-2015)

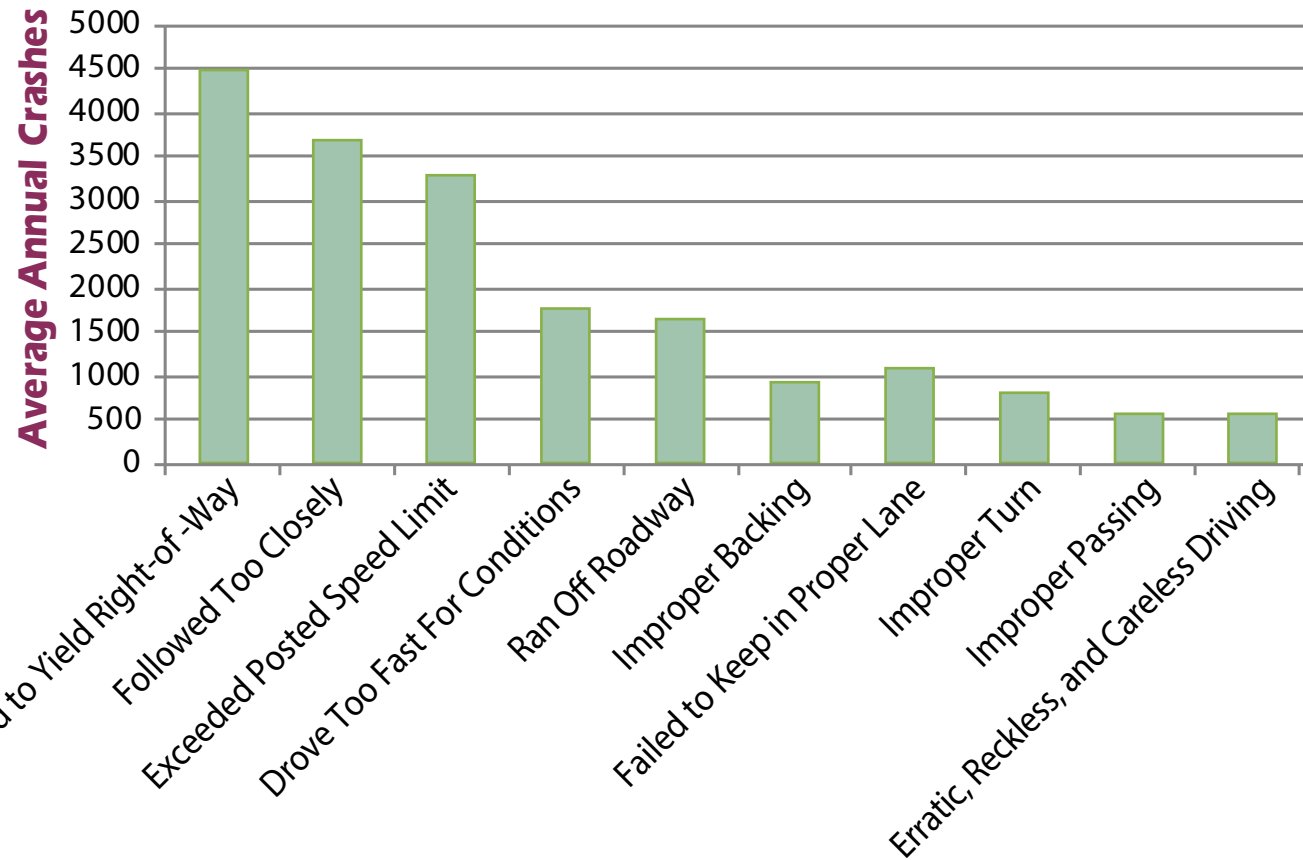


Top Fixed Objects Struck (2012-2015)

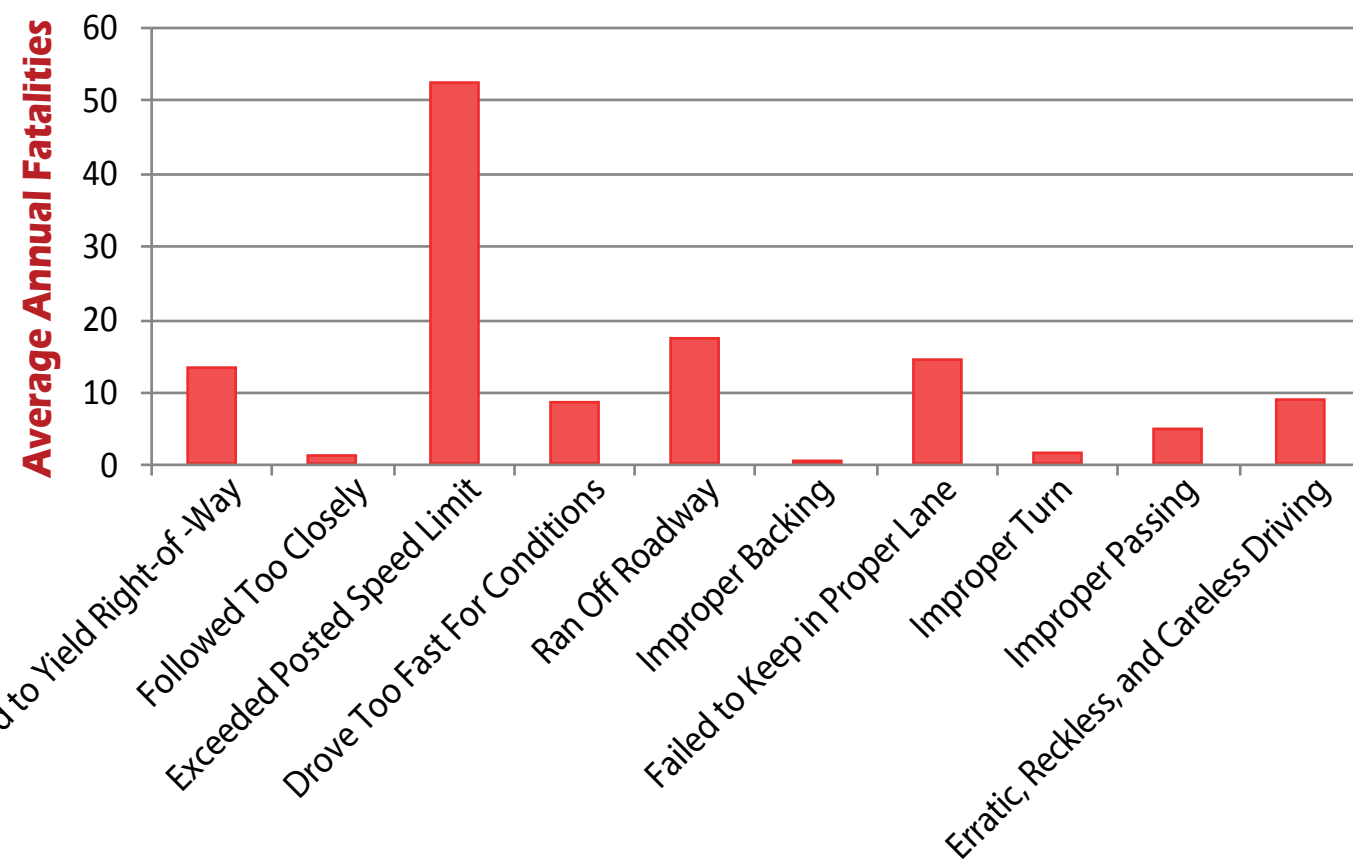


Fixed objects struck data, as currently defined, has only been available since 2012.

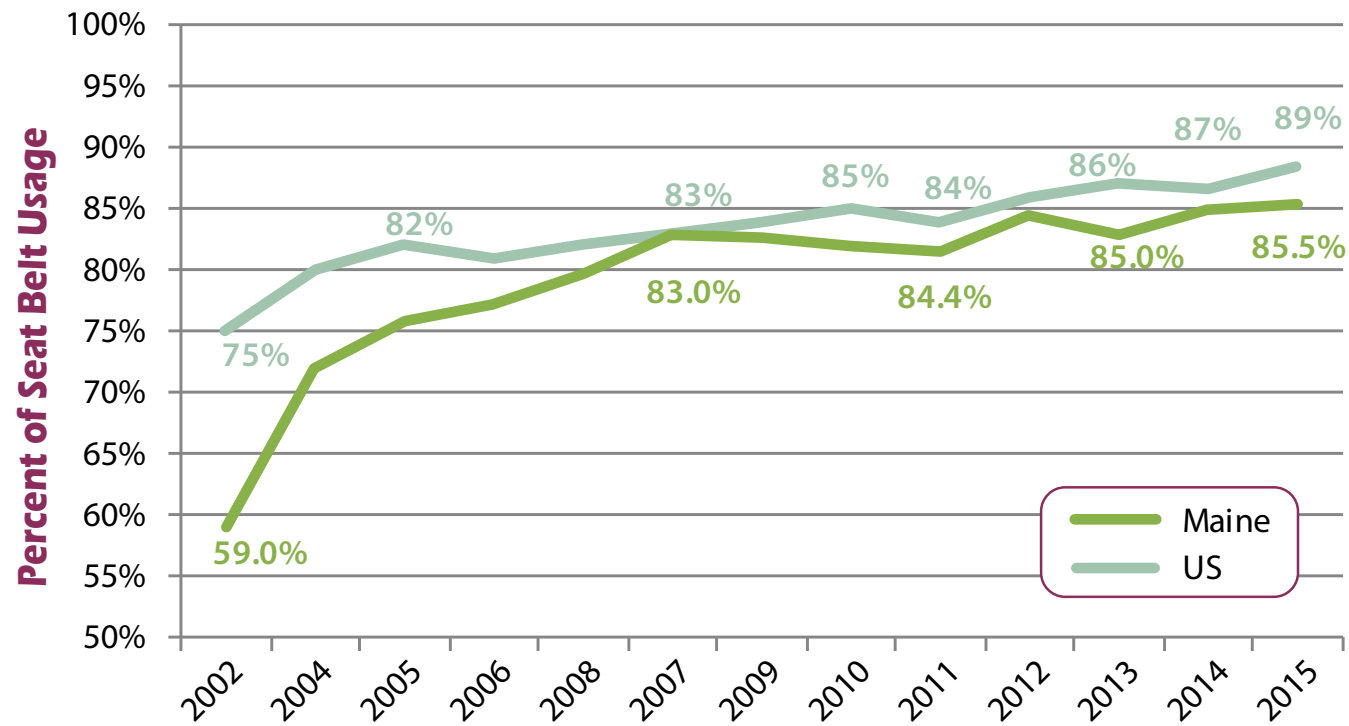
Top Driver Actions in Crashes (2006-2015)



Top Driver Actions in Fatal Crashes (2006-2015)

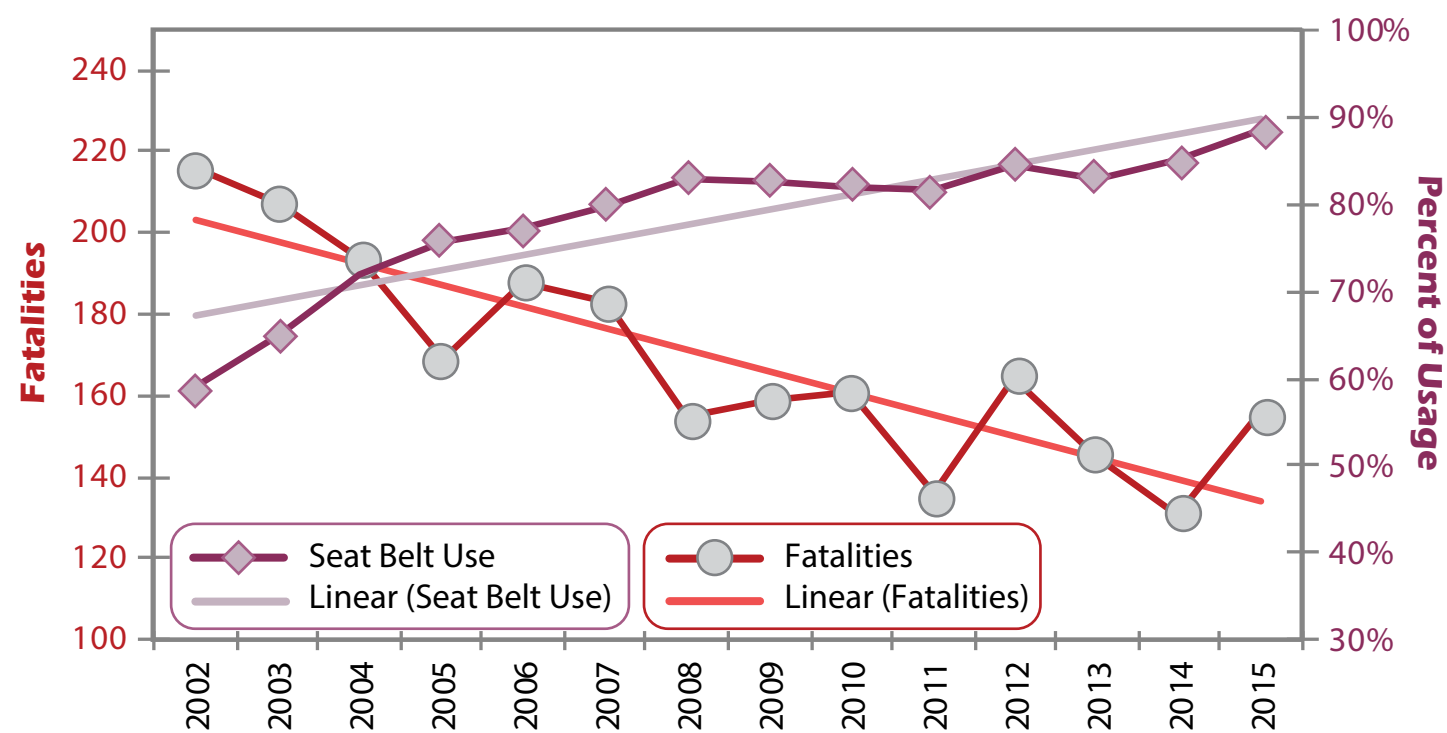


Seat Belt Usage – Maine and United States

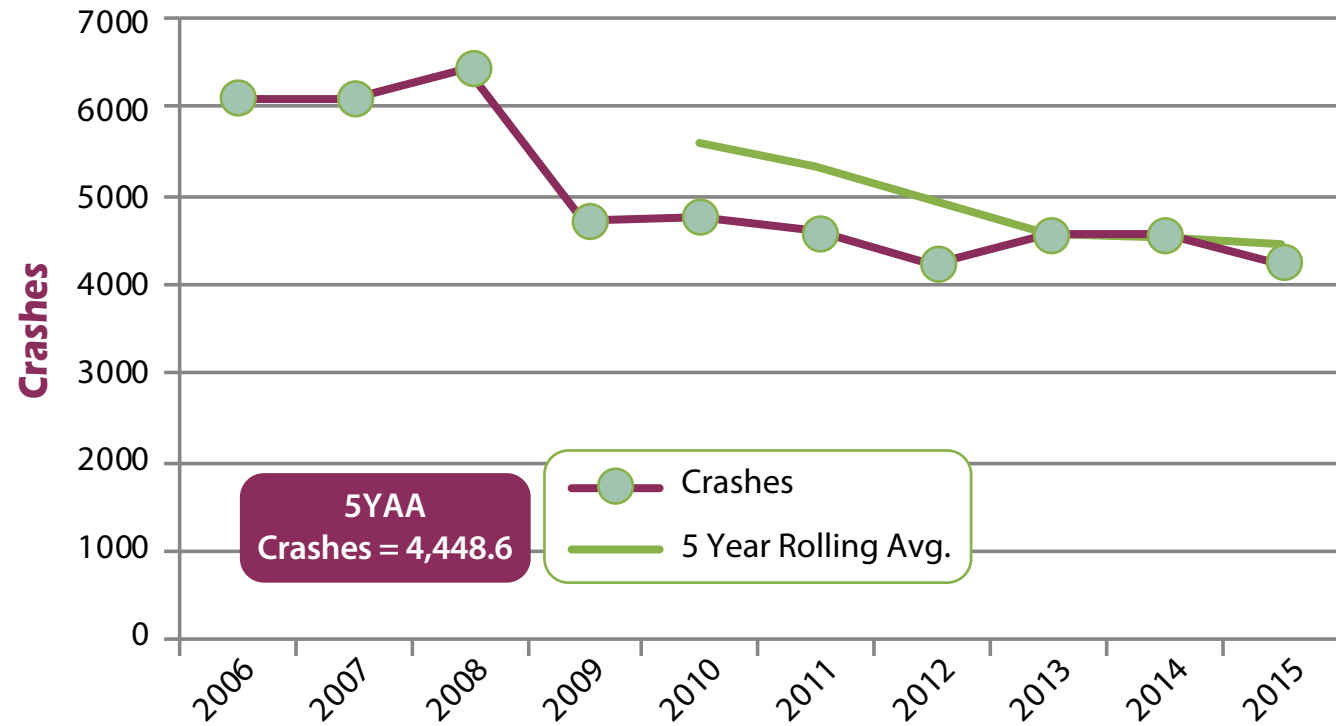


Seat belt usage numbers are developed by local observational studies.

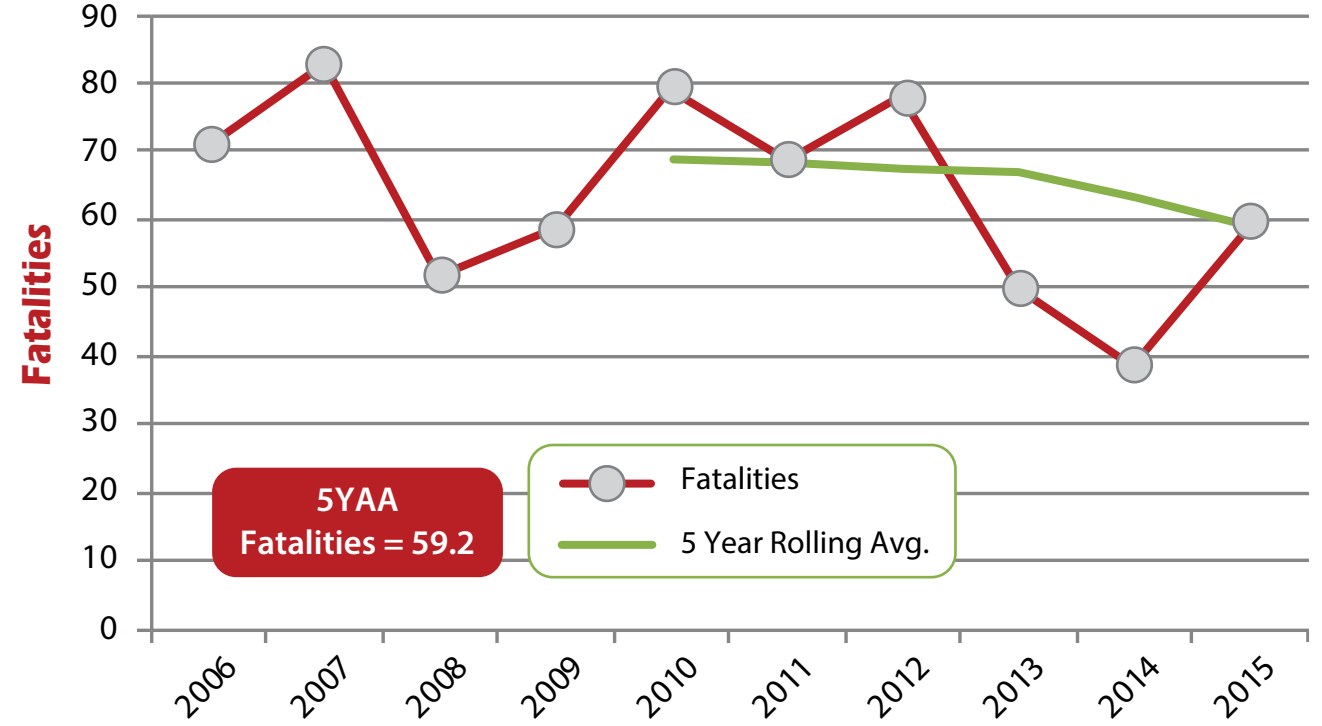
Maine Fatalities vs. Seat Belt Usage



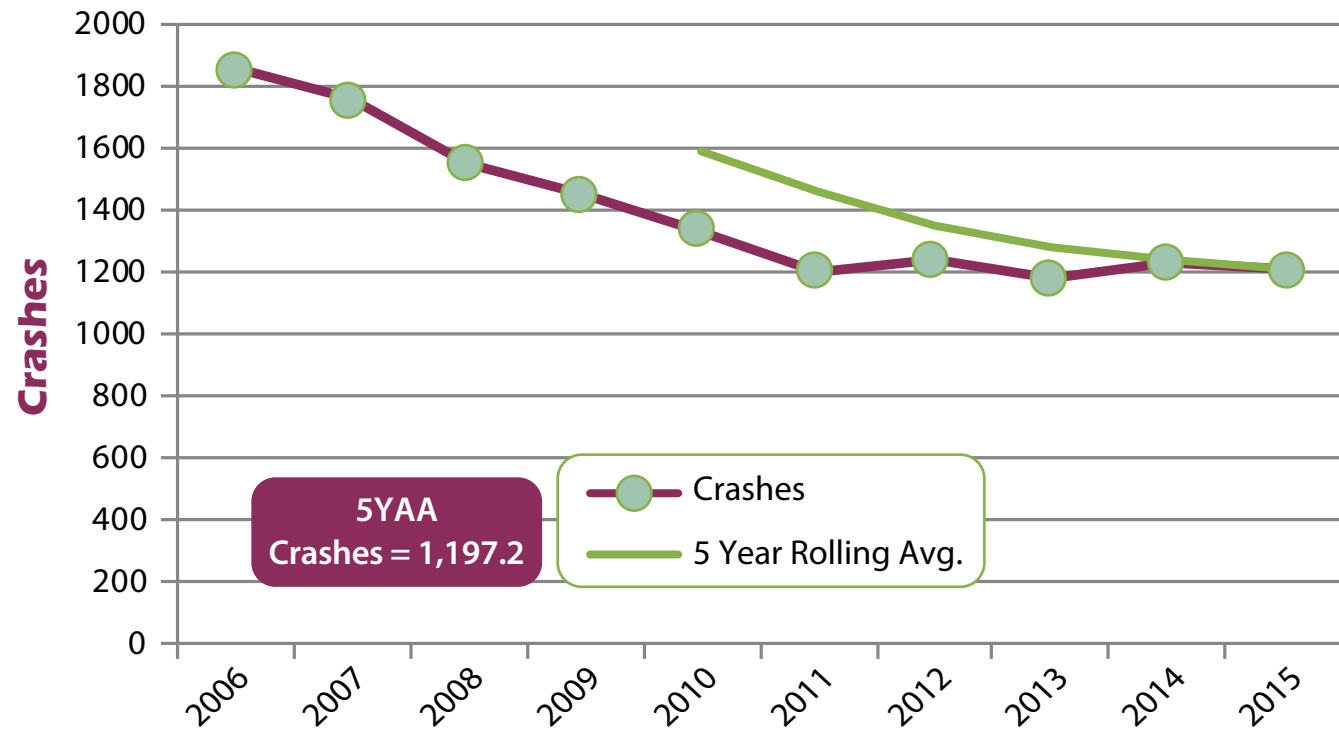
Illegal/Unsafe Speed Crashes



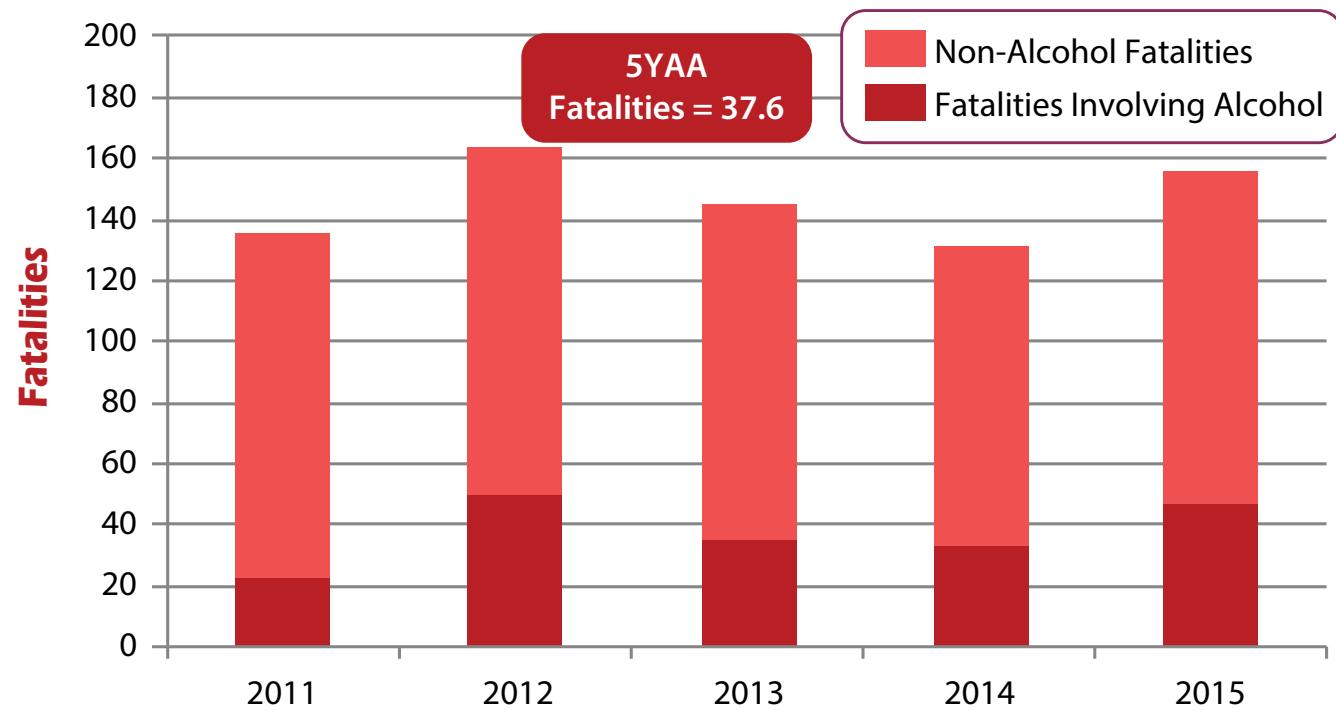
Illegal/Unsafe Speed Fatalities



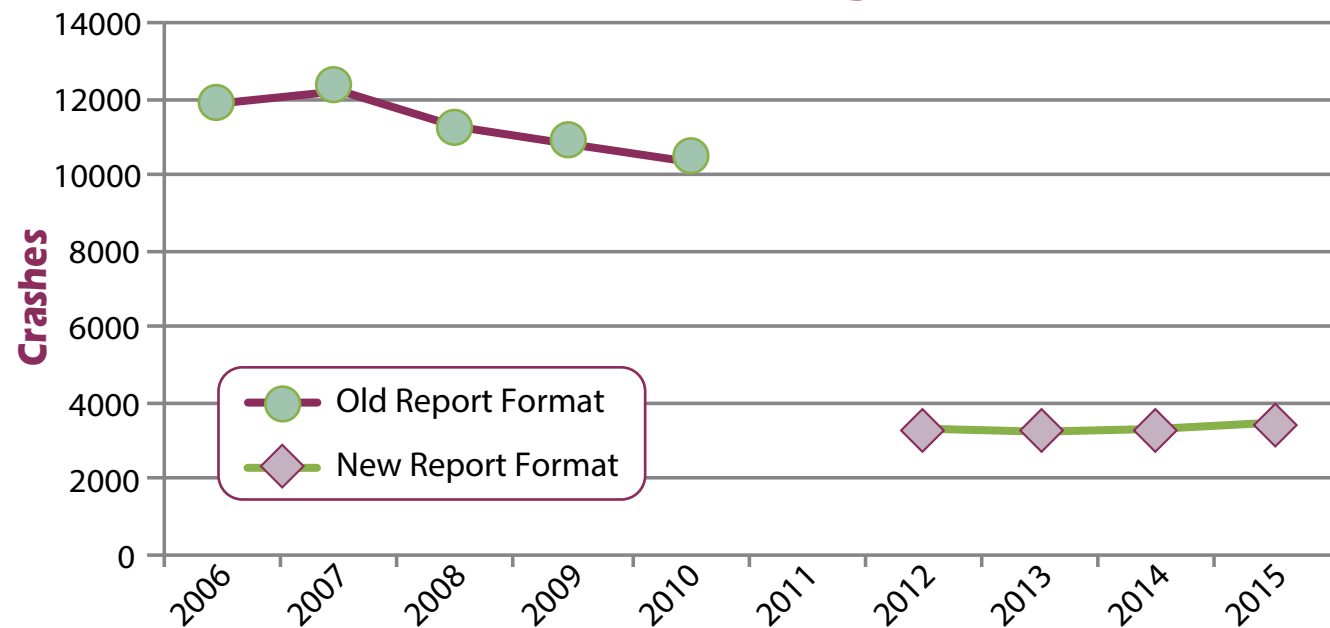
Impaired Crashes



Alcohol and Non-Alcohol Related Fatalities

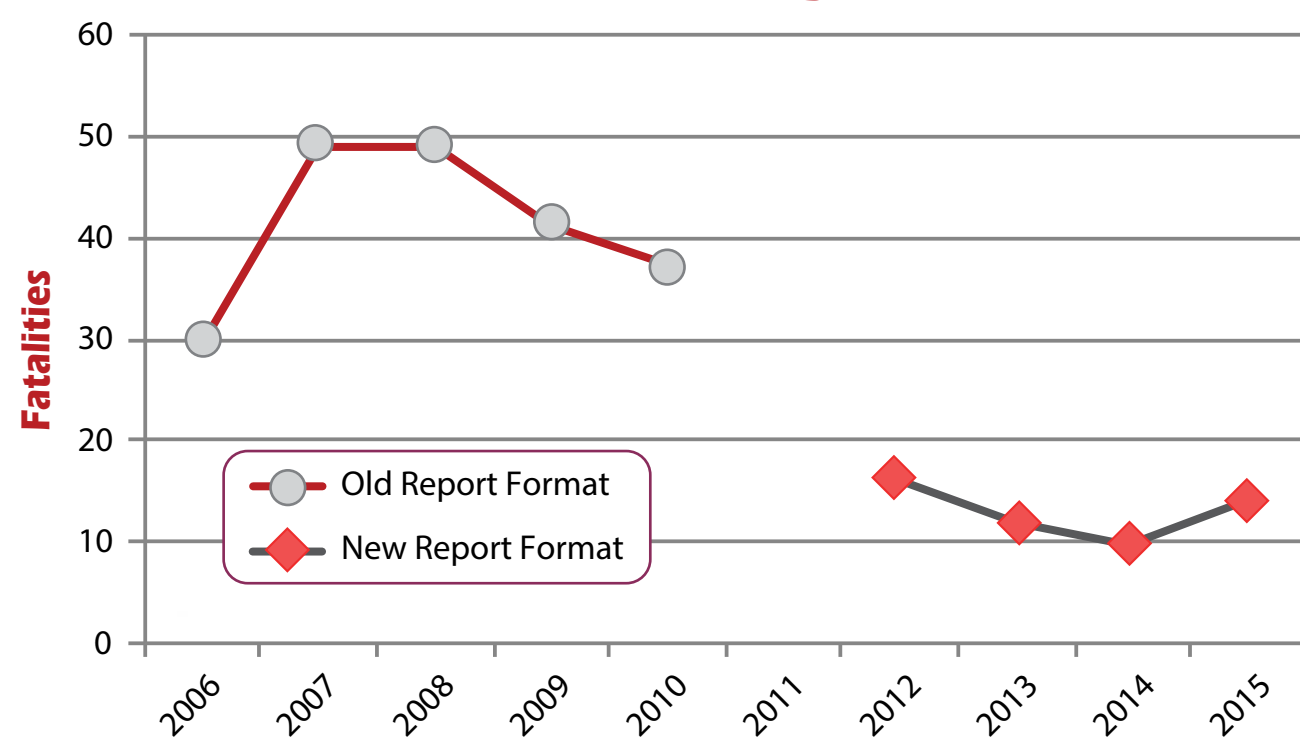


Distracted Driving Crashes



Prior to 2011, police crash reports captured general distracted/inattentive driving factors, and 10,000+ distraction/inattention related crashes were reported annually. During 2011, Maine switched to an updated crash report in line with national guidance that now reports on specific distracted practices, but does not include generic inattention, greatly reducing the reported number of distracted crashes. Distracted driving behaviors are usually self-reported.

Distracted Driving Fatalities



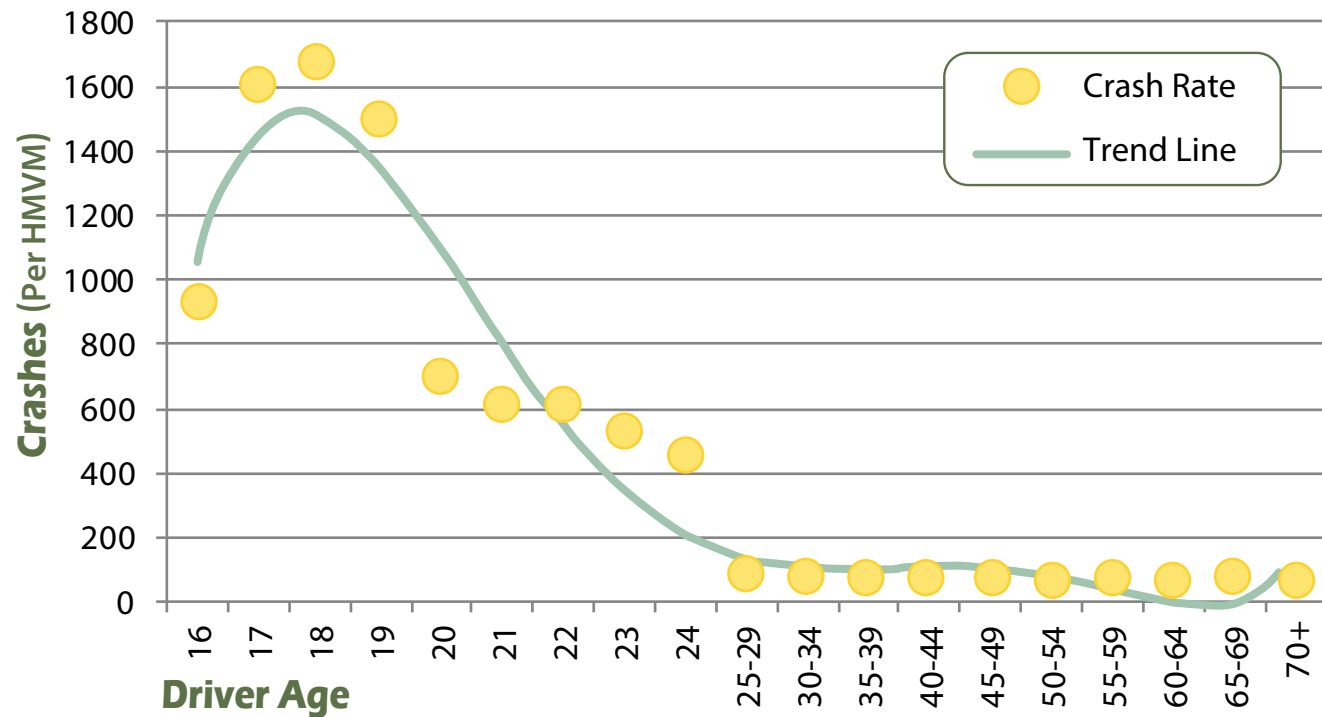
Crashes Involving Drivers with Suspended Licenses						
Year	All Crashes	Suspended Crashes	% of Suspended Crashes	All Fatalities	Suspended Fatalities	% of Suspended Fatalities
2003	35,208	795	2.26%	207	9	4.35%
2004	35,014	854	2.44%	194	20	10.31%
2005	35,047	707	2.02%	169	17	10.06%
2006	32,067	679	2.12%	188	18	9.57%
2007	33,386	789	2.36%	183	16	8.74%
2008	31,779	584	1.84%	155	4	2.58%
2009	28,980	613	2.12%	159	14	8.81%
2010	27,893	581	2.08%	161	8	4.97%
2011	28,654	577	2.01%	136	11	8.09%
2012	28,522	661	2.32%	164	16	9.76%
2013	30,510	630	2.06%	145	19	13.10%
2014	31,880	667	2.09%	131	14	10.69%
2015	32,845	677	2.06%	156	15	9.62%
5 Year Annual Average	642.4	2.11%			15	9.91%

Fatalities by Selected Categories by Year (2011-2015)						
Year	Pedestrian	Bicycle	Motorcycle	Impaired	% Impaired	Total Fatalities
2011	11	0	15	23	17	136
2012	9	1	24	50	30	164
2013	11	4	14	35	24	145
2014	9	2	10	33	25	131
2015	19	0	32	47	30	156
5 Year Avg.	11.8	1.4	19	37.6	25.2	146.4

This table shows the relationship between the various classifications of fatalities and the total number of fatalities.

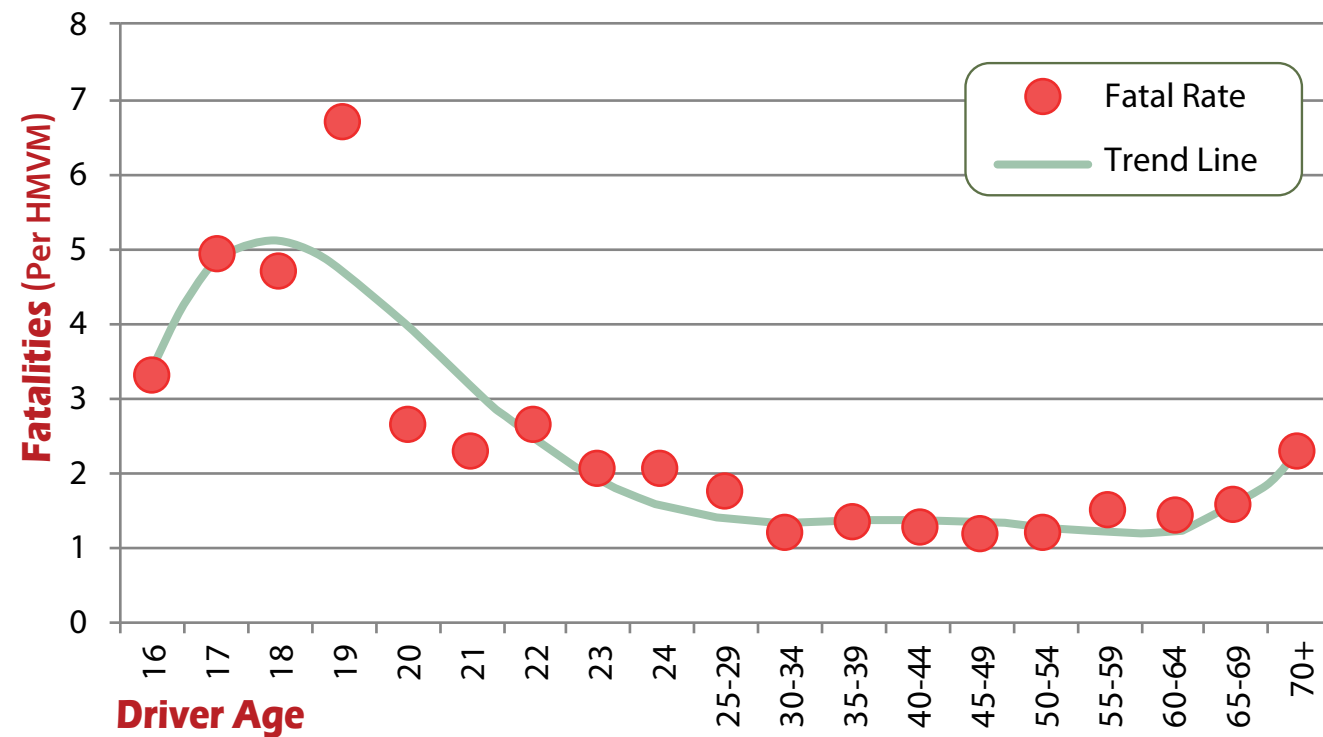


Crash Rates by Driver Age (2011-2015)



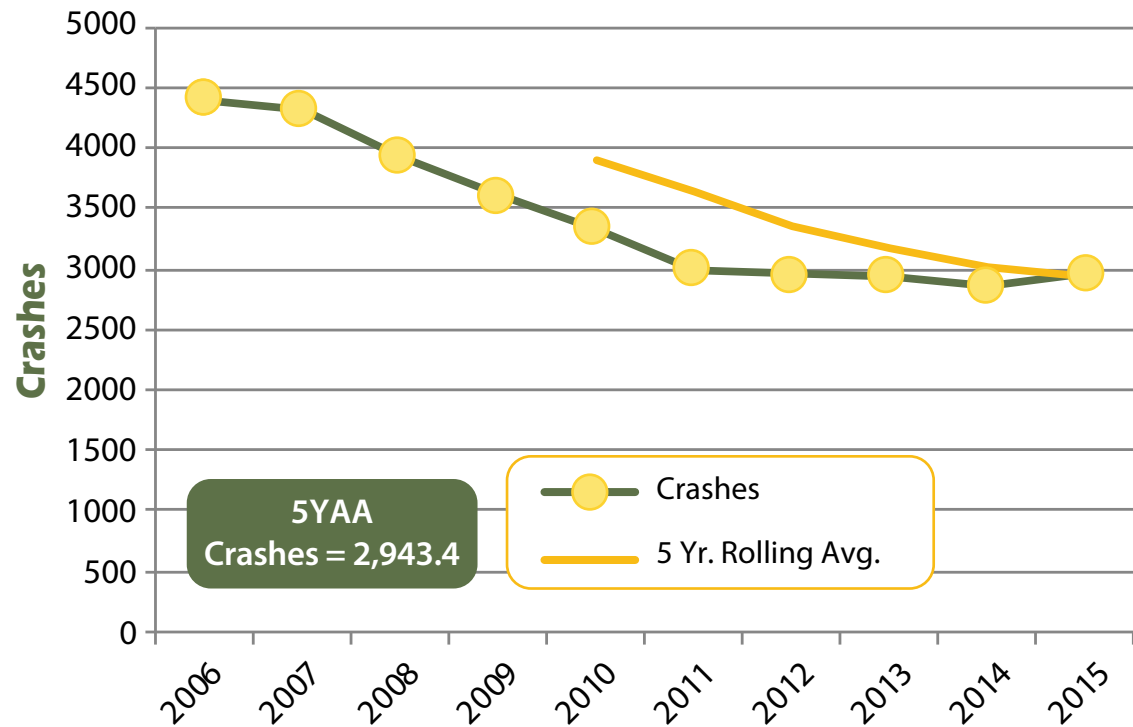
The rates on the next two pages are estimates, based on Maine's licensed driver population and national estimates on annual mileage driven by age group. Any crash-involved driver is included in this data, regardless of fault.

Fatal Crash Rates by Driver Age (2011-2015)

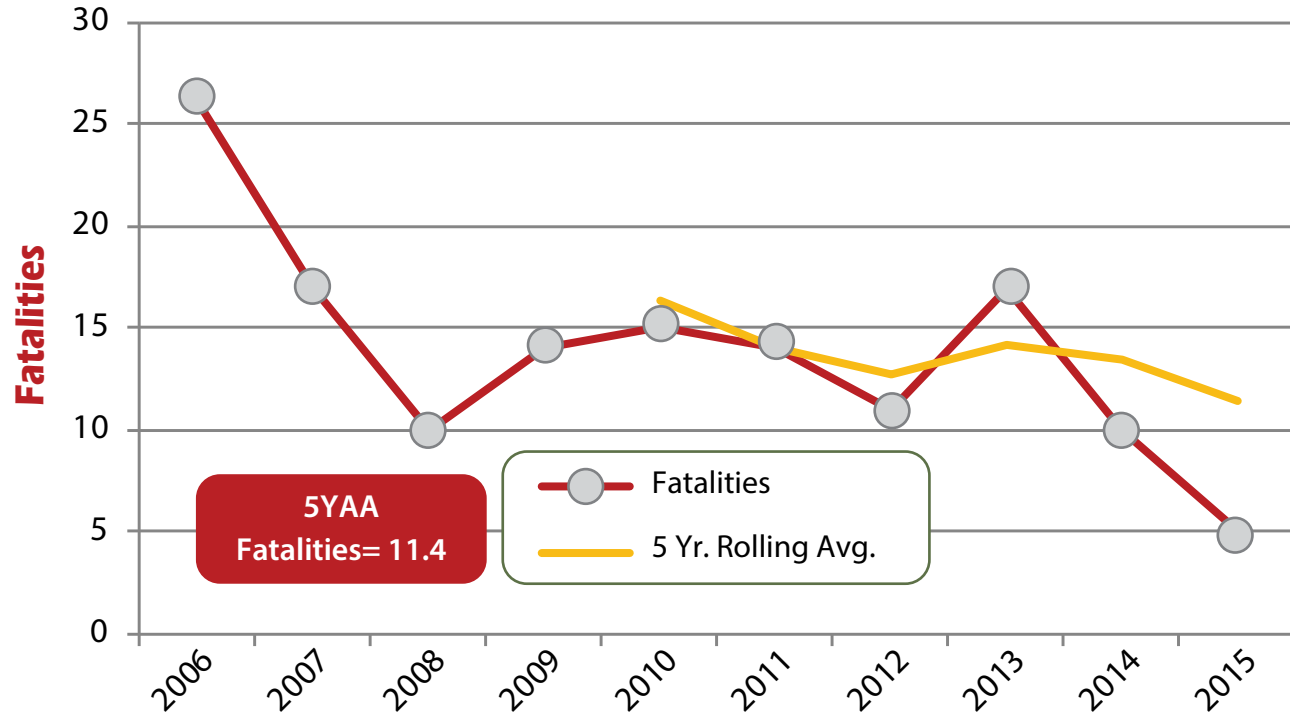


Licensed Drivers (Ages 16-18)	
2004	30,661
2005	30,522
2006	30,836
2007	30,182
2008	28,770
2009	28,030
2010	27,193
2011	26,243
2012	25,203
2013	24,383
2014	23,972
2015	23,240

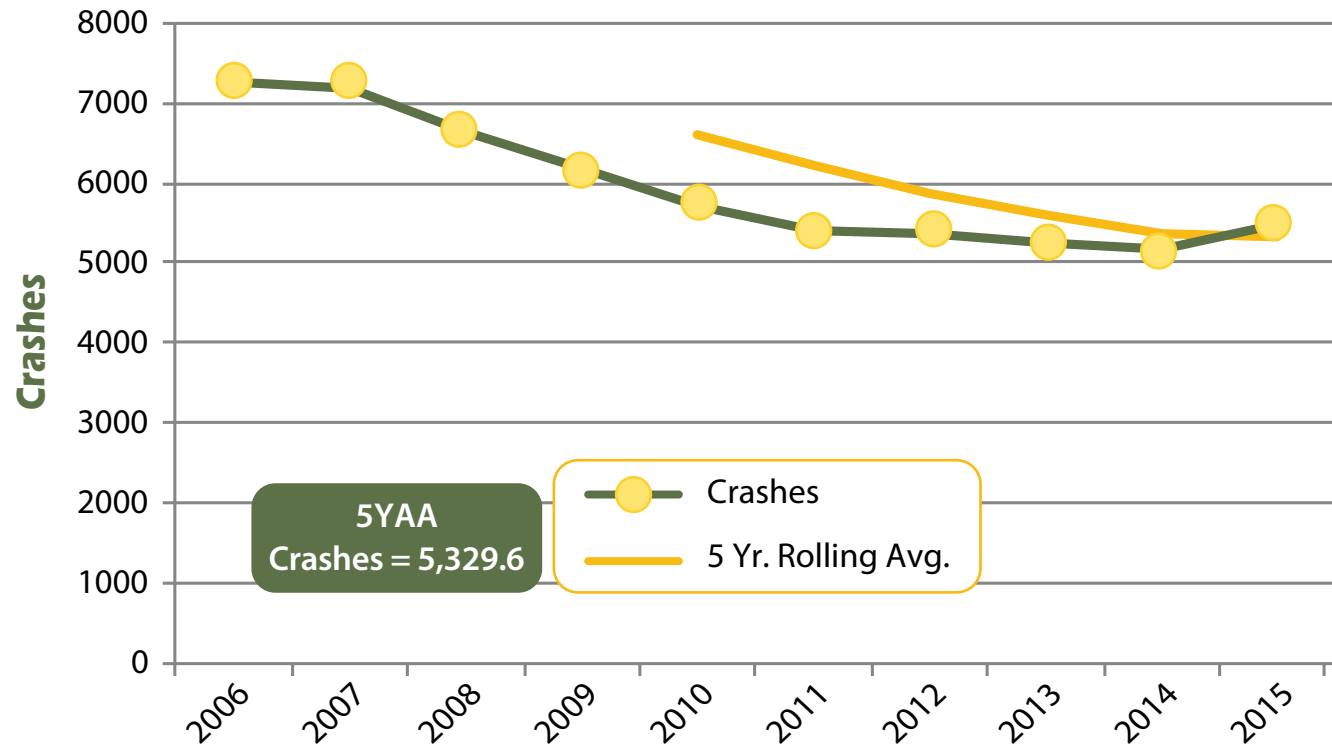
Driver Crashes (Ages 16-18)



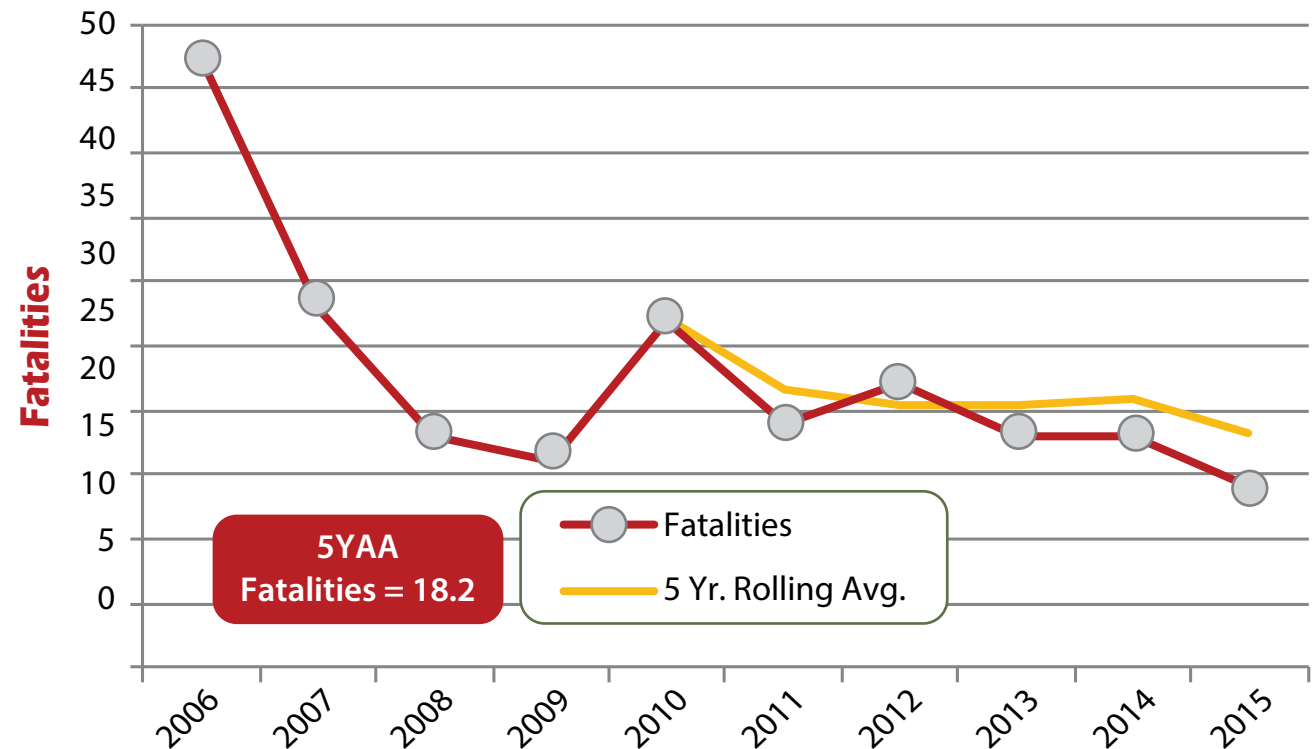
Driver Fatalities (Ages 16-18)



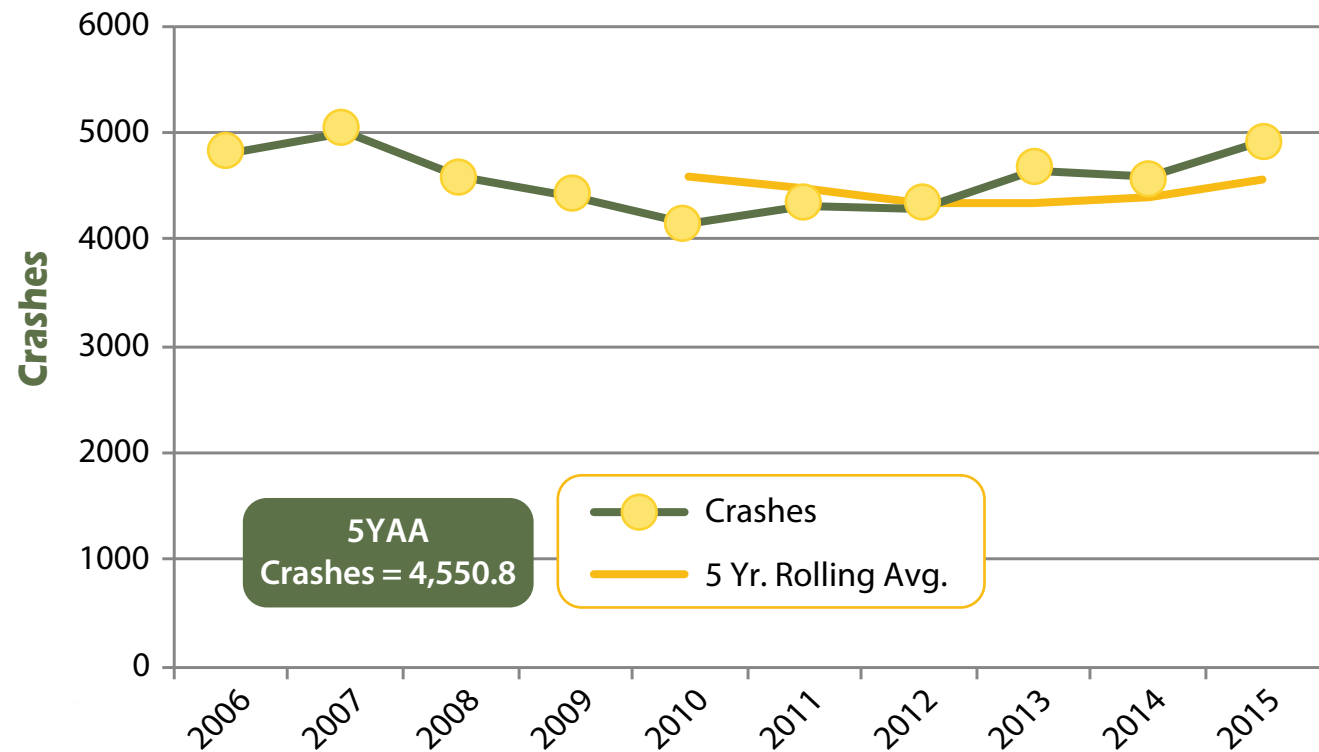
Driver Crashes (Ages 16-20)



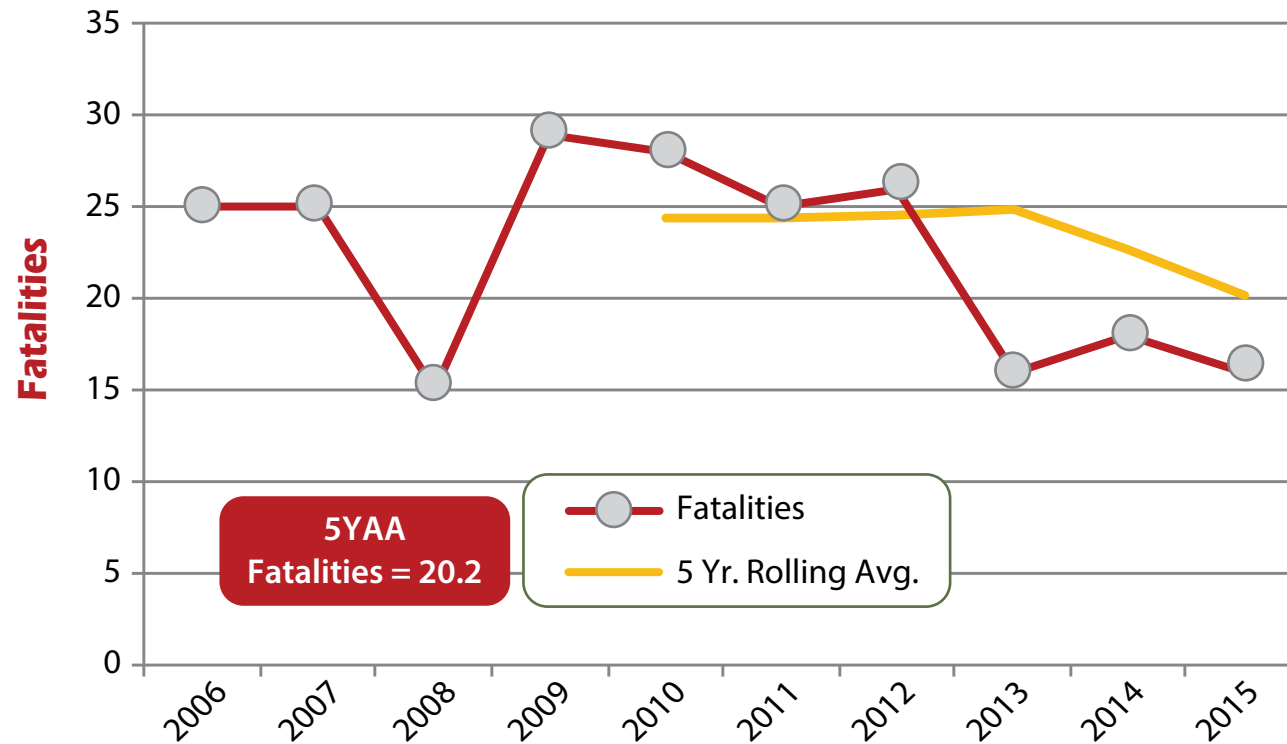
Driver Fatalities (Ages 16-20)



Driver Crashes (Ages 21-24)



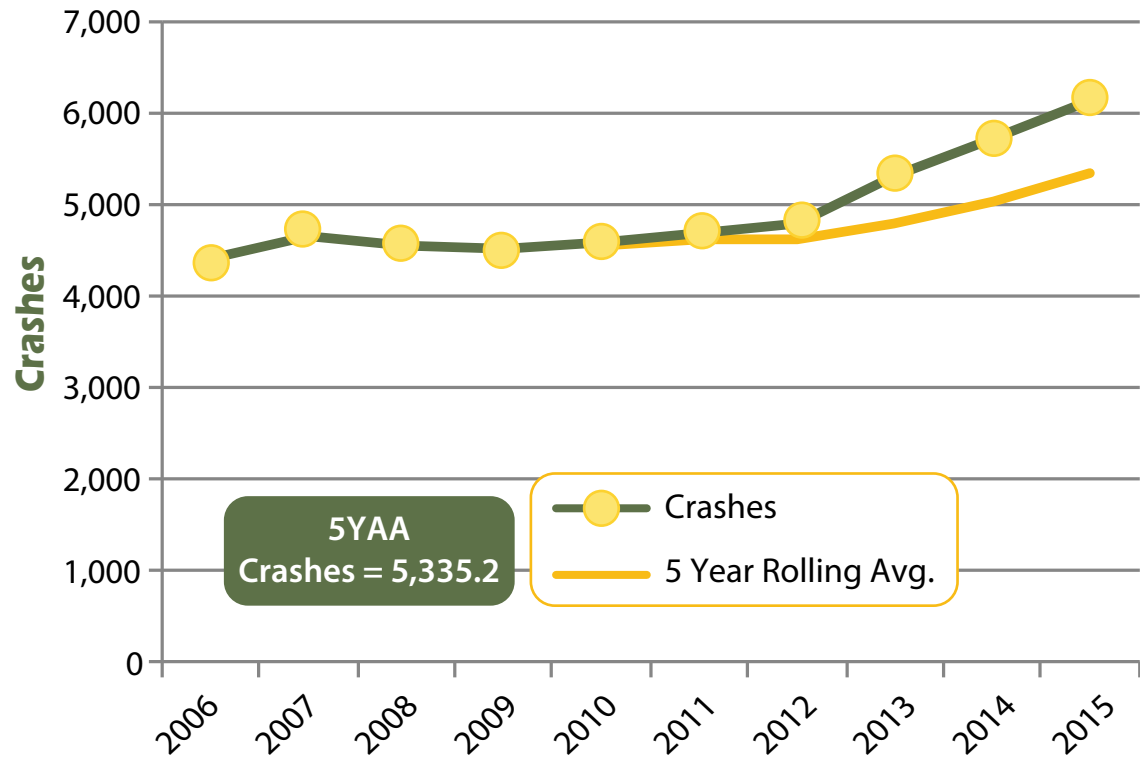
Driver Fatalities (Ages 21-24)



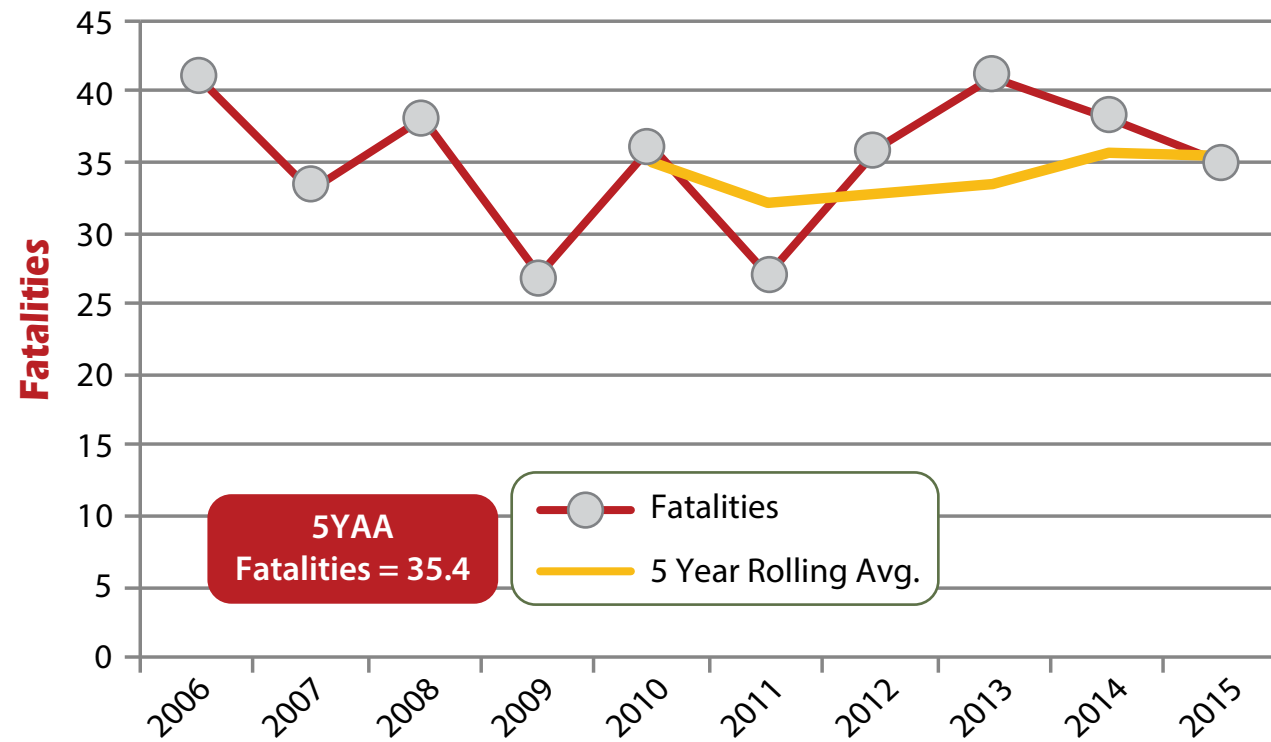
Mature Licensed Drivers		
Year	65-69	70+
2003	47,675	102,719
2004	49,084	105,750
2005	50,075	109,905
2006	51,310	109,659
2007	54,425	110,616
2008	58,174	114,247
2009	61,265	116,697
2010	81,677	118,323
2011	67,766	121,280
2012	72,553	124,625
2013	76,107	130,121
2014	80,585	134,162
2015	85,209	137,842

(BMV figures)

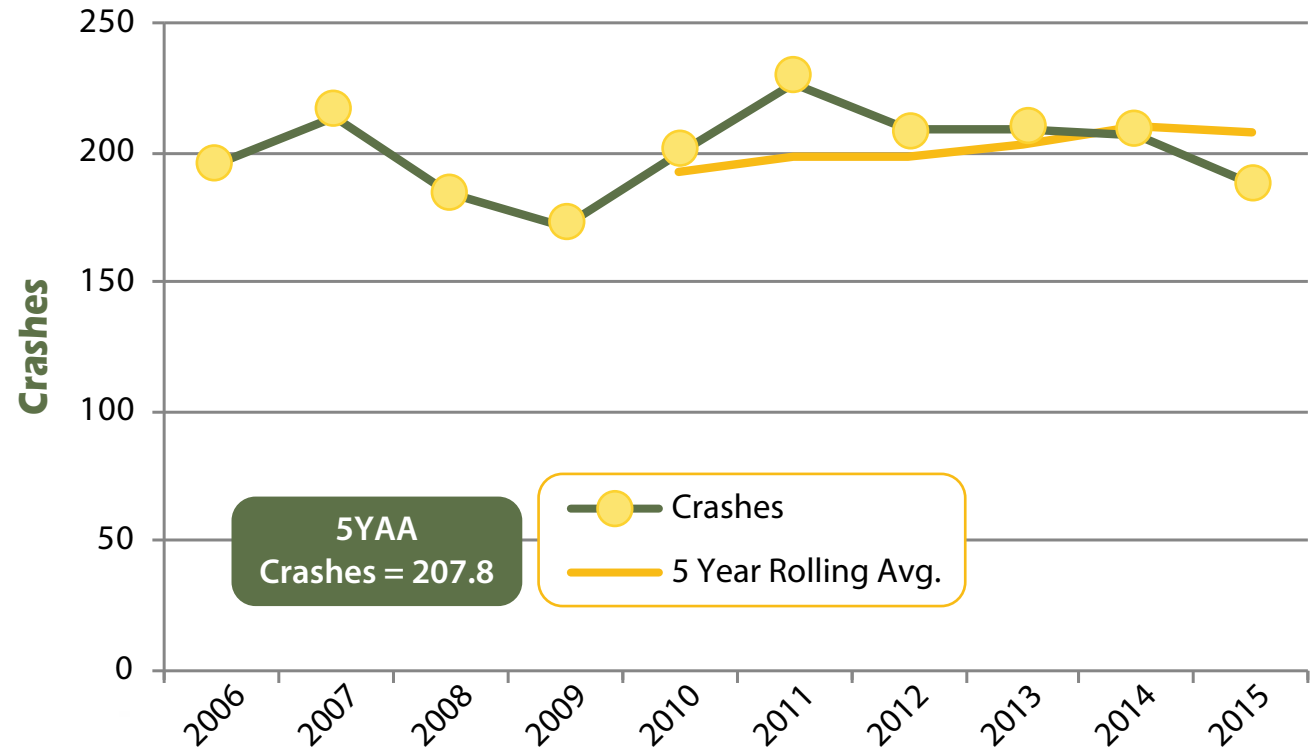
Mature Driver Crashes (Ages 65-70+)



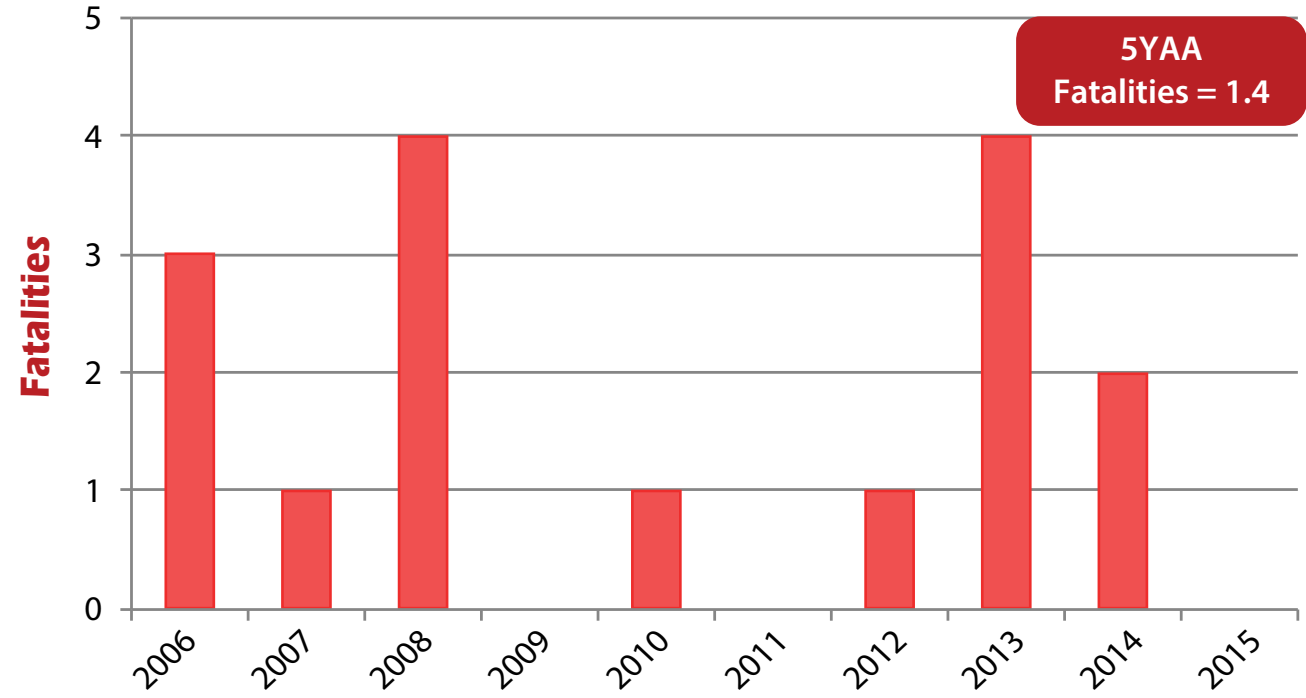
Mature Driver Fatalities (Ages 65-70+)



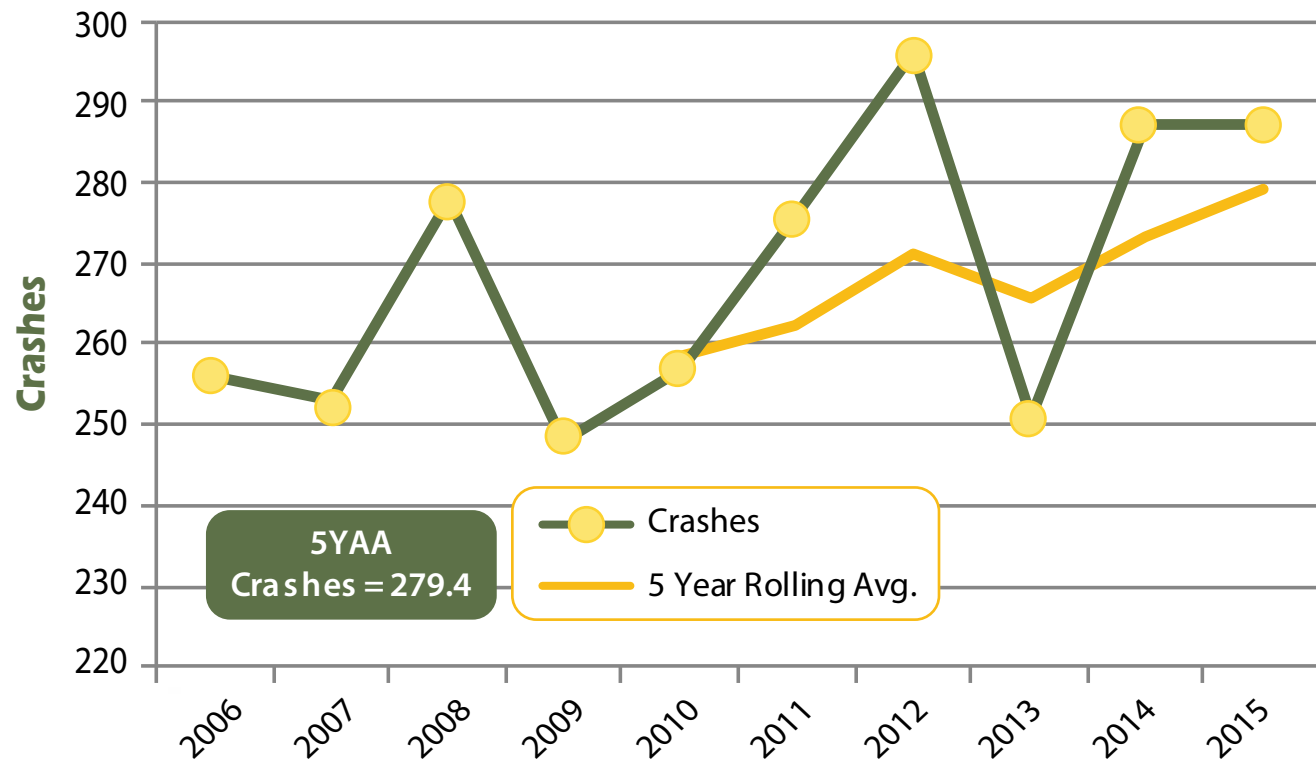
Bike Crashes



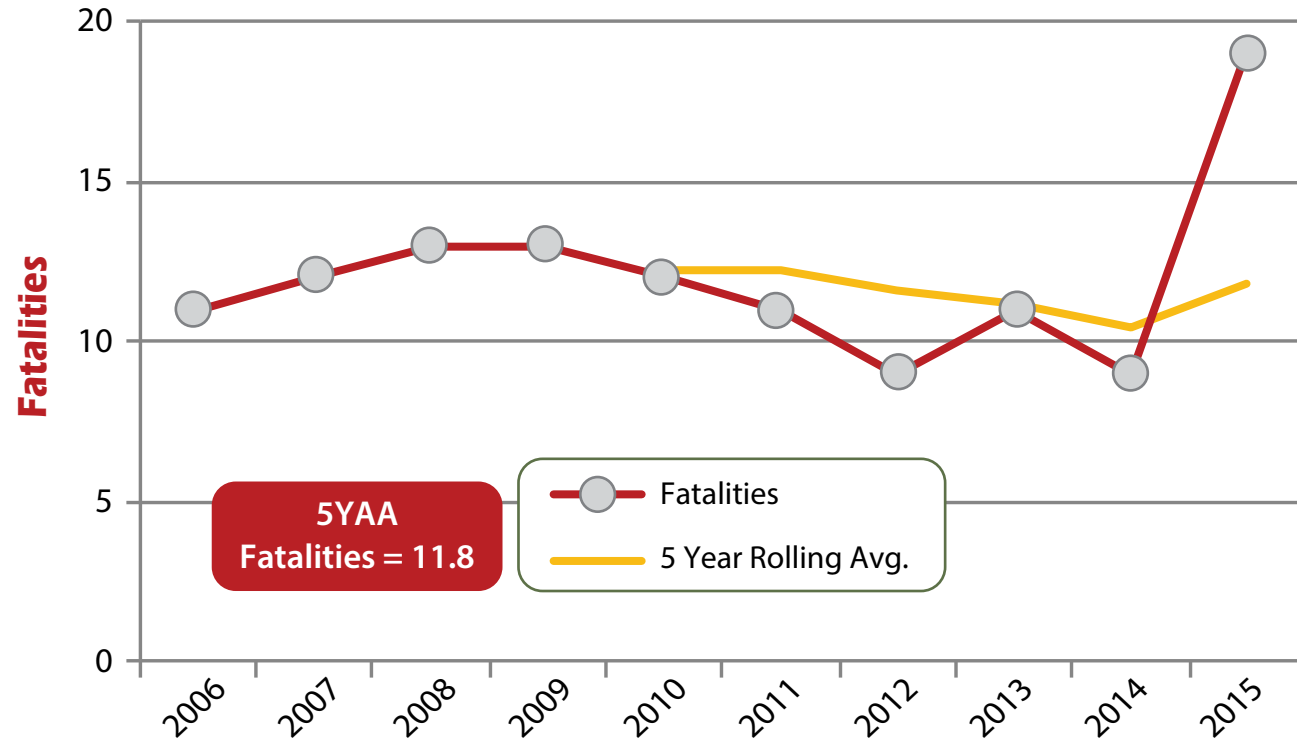
Bike Fatalities



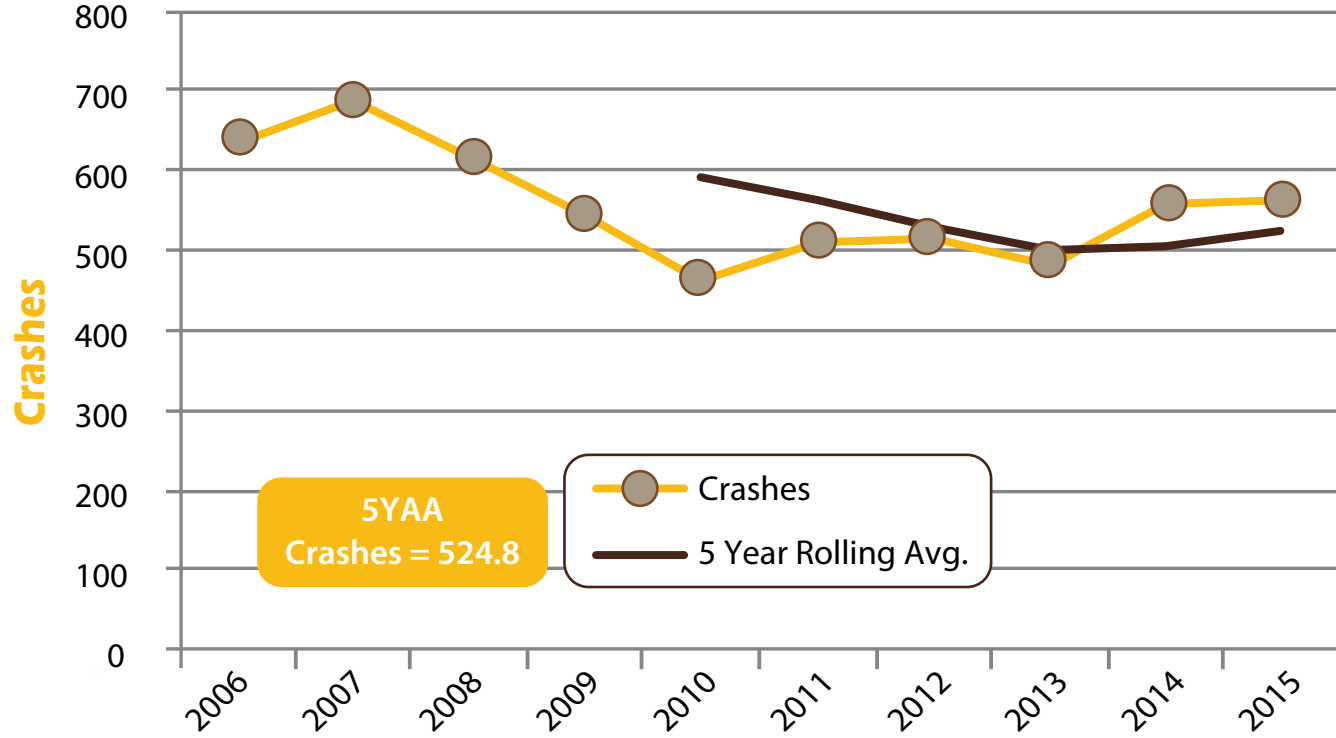
Pedestrian Crashes



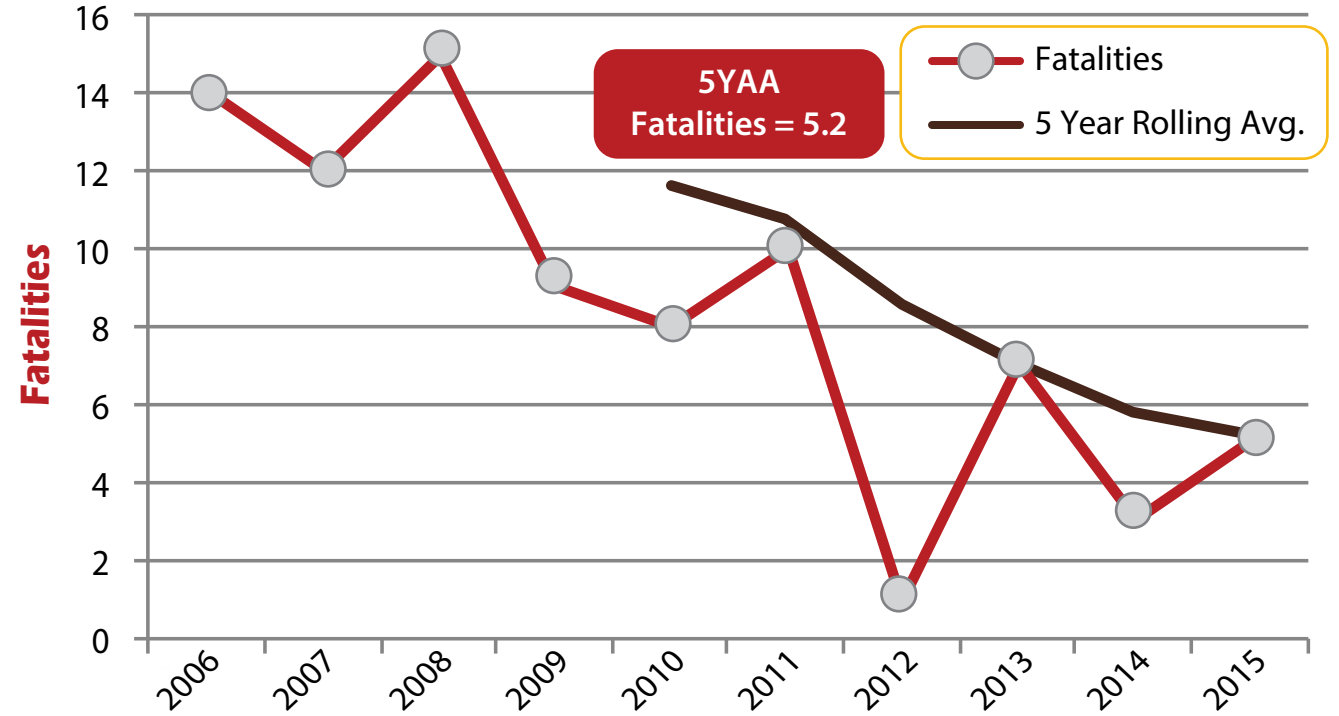
Pedestrian Fatalities



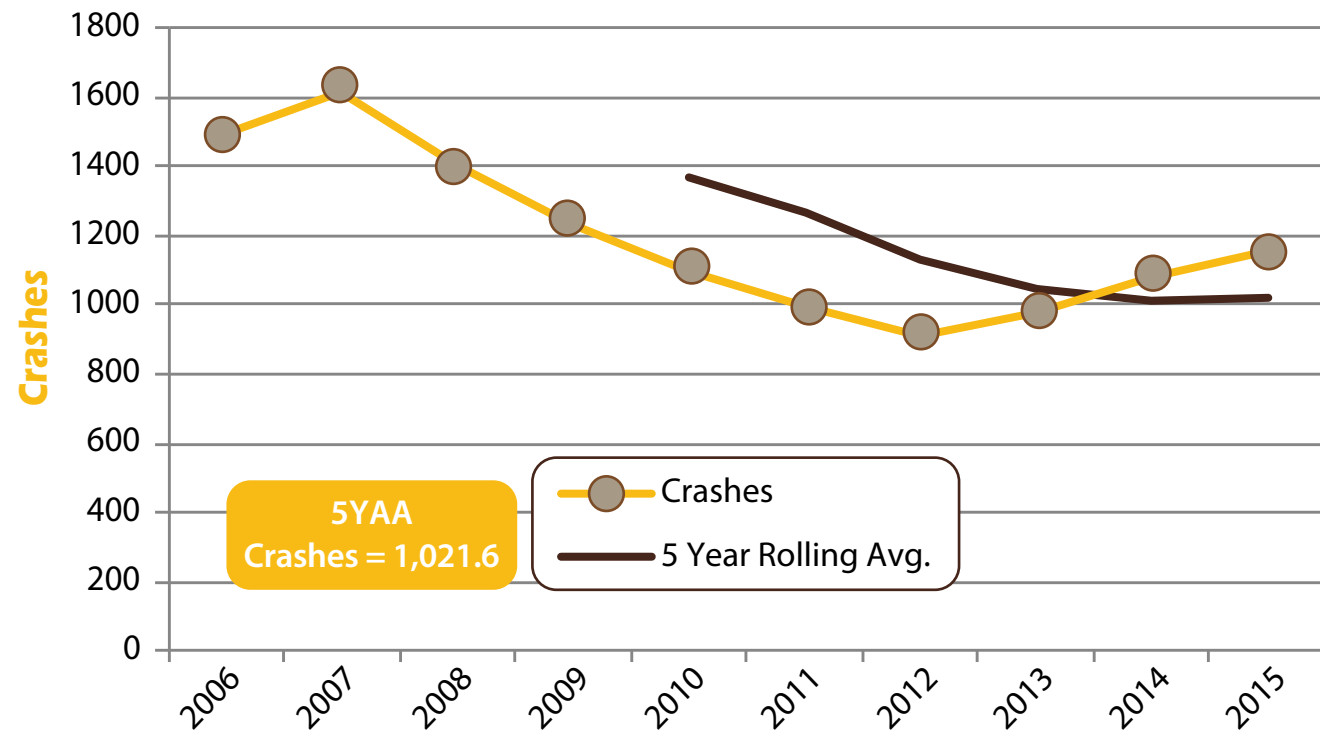
Truck Crashes (Units With Five Axles or More)



Trucking Fatalities (Units With Five Axles or More)

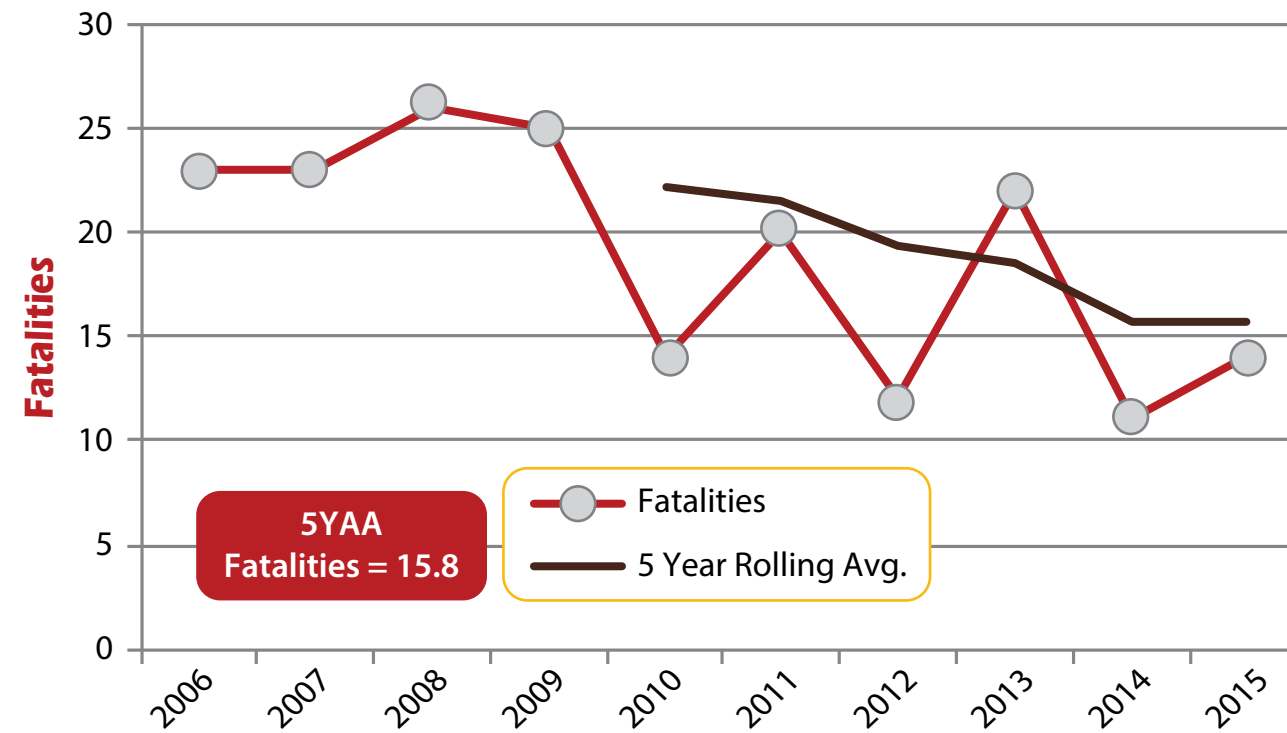


Commercial Vehicle Crashes



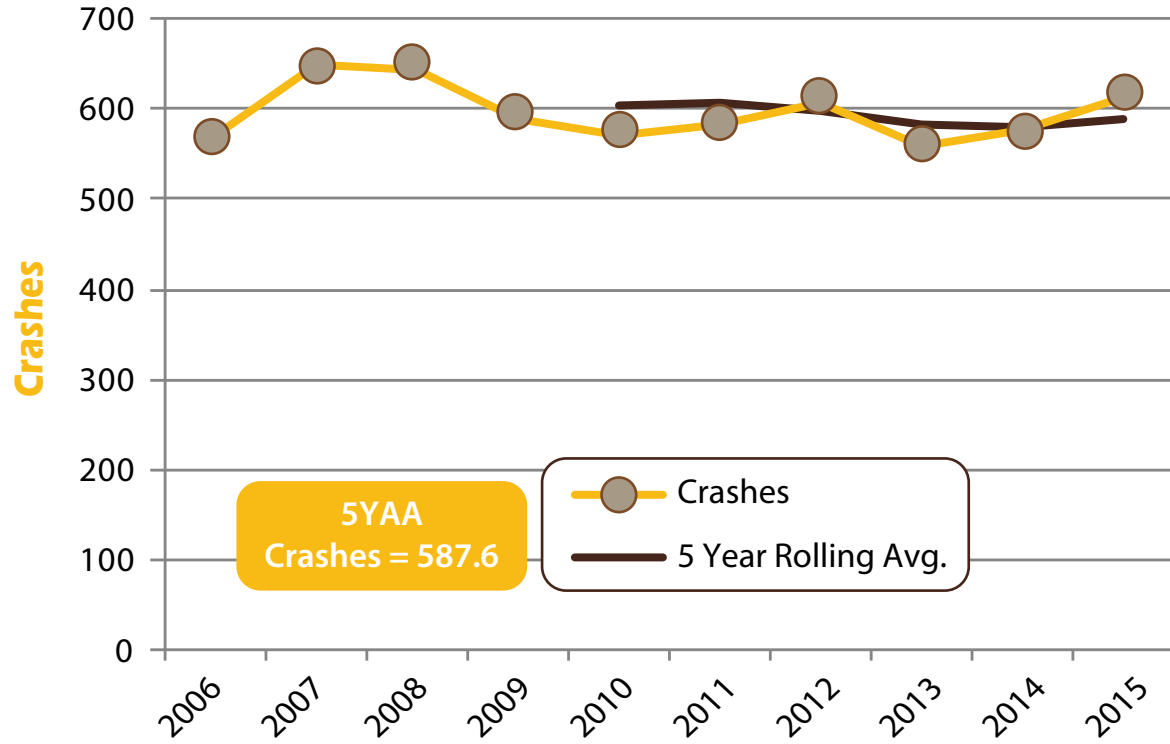
This category includes large trucks and buses with a seating capacity of 15 or more (including the driver) that result in an injury.

Commercial Vehicle Fatalities

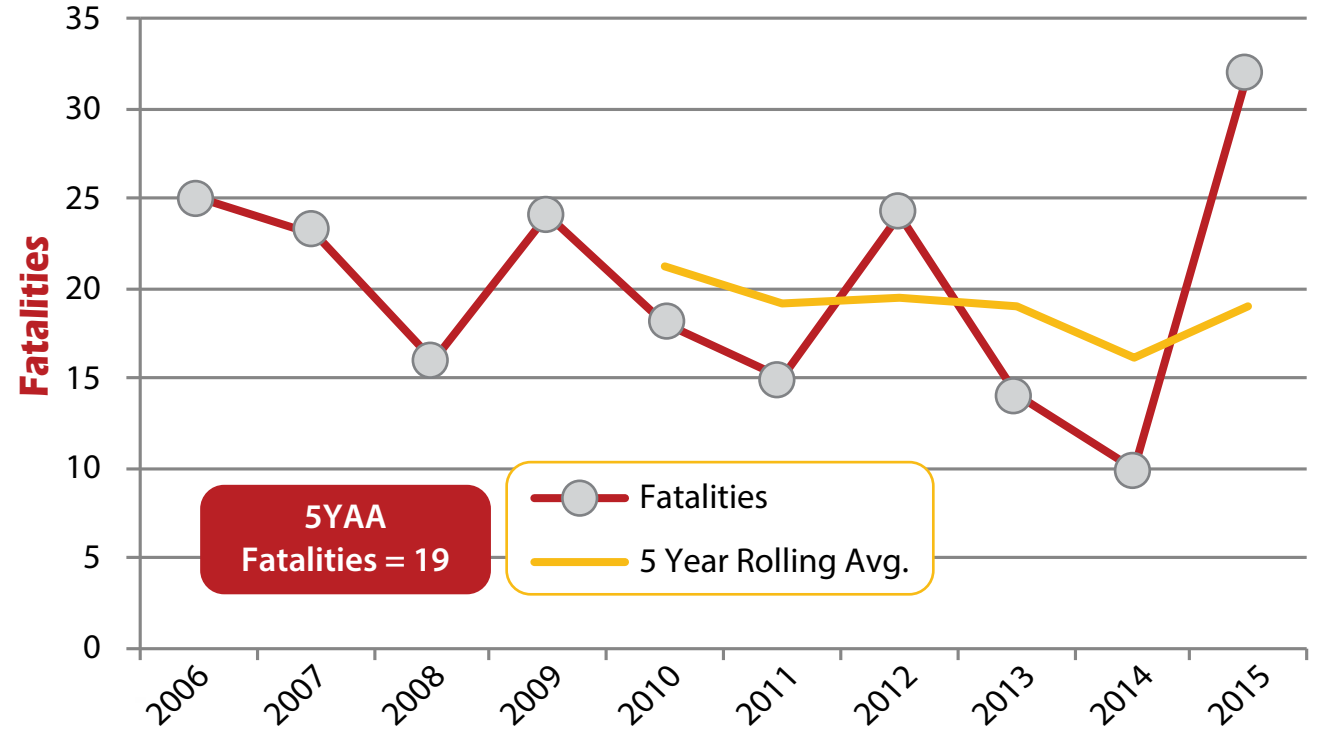


Motorcycle Registrations	
2005	92,519
2006	94,331
2007	96,998
2008	99,783
2009	102,763
2010	105,392
2011	106,633
2012	108,477
2013	110,699
2014	112,428
2015	113,512

Motorcycle Crashes

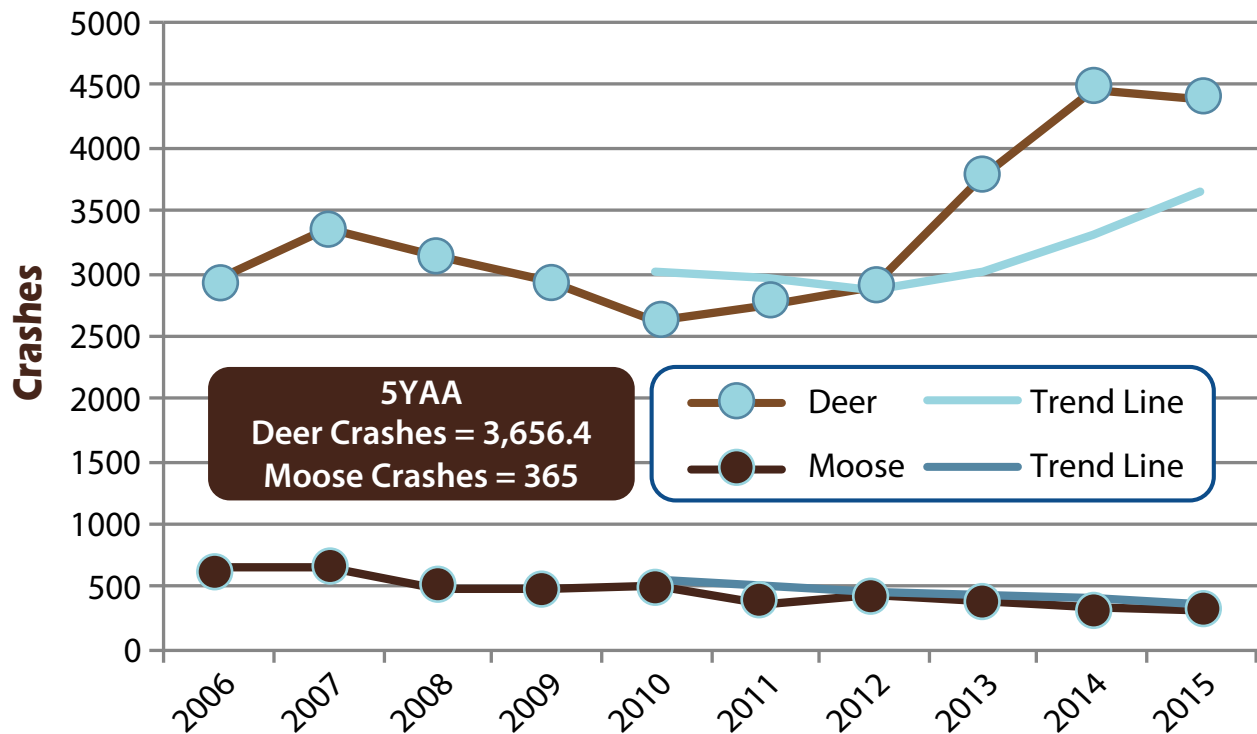


Motorcycle Fatalities

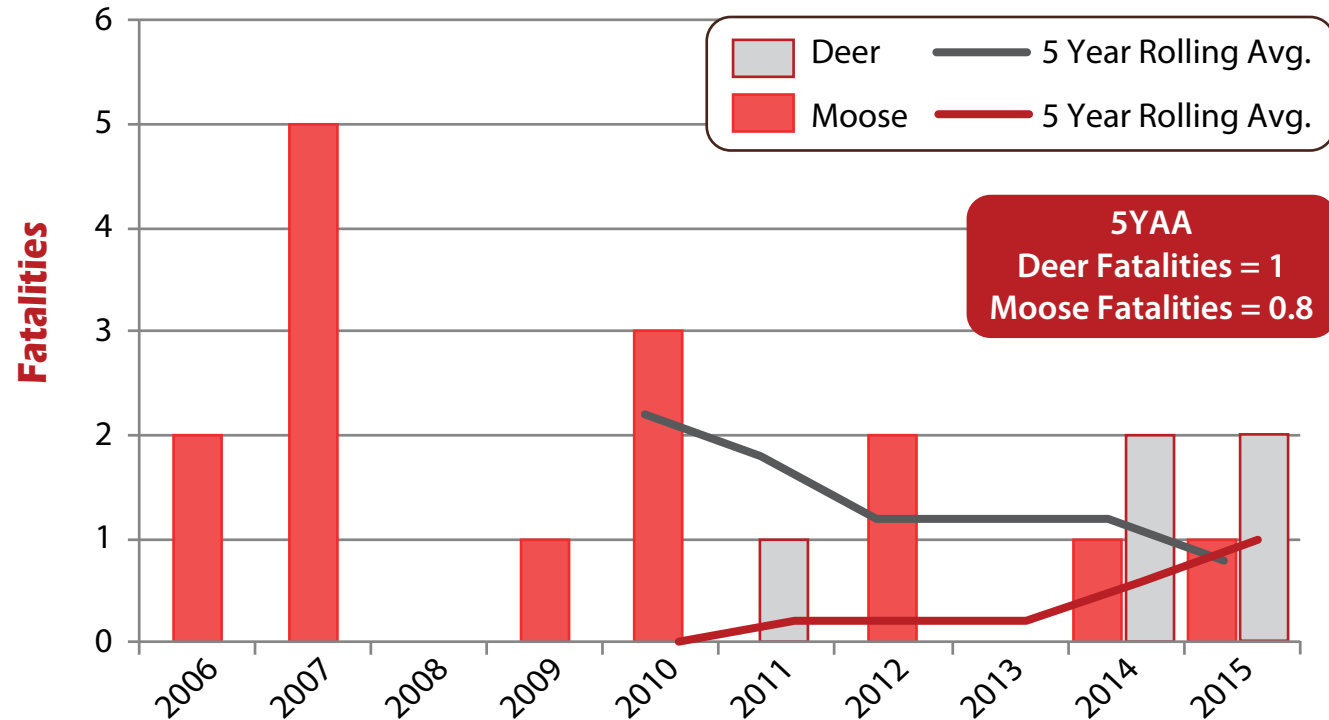


Large Animals (Deer and Moose)

Deer and Moose Crashes



Deer and Moose Fatalities

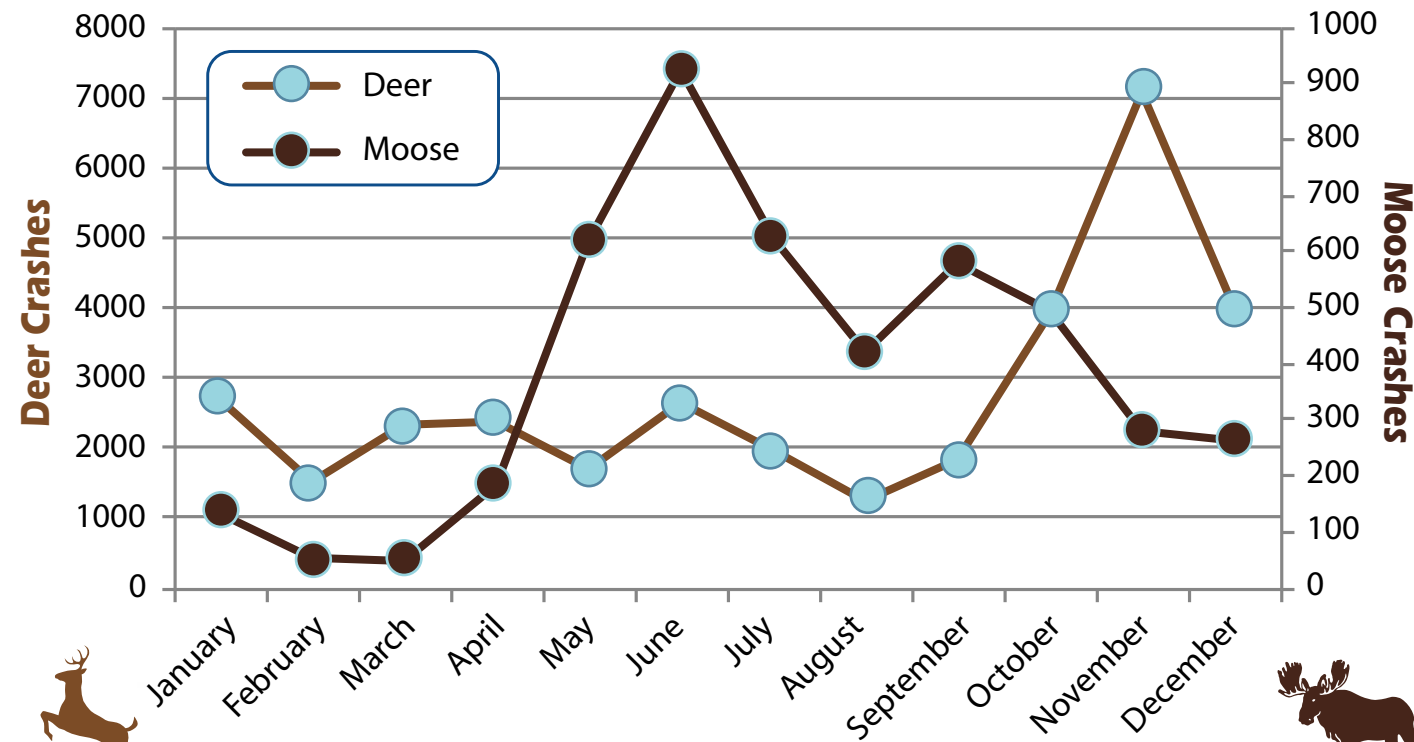


Note: Of the five deer fatalities shown, all were collisions with motorcycles.

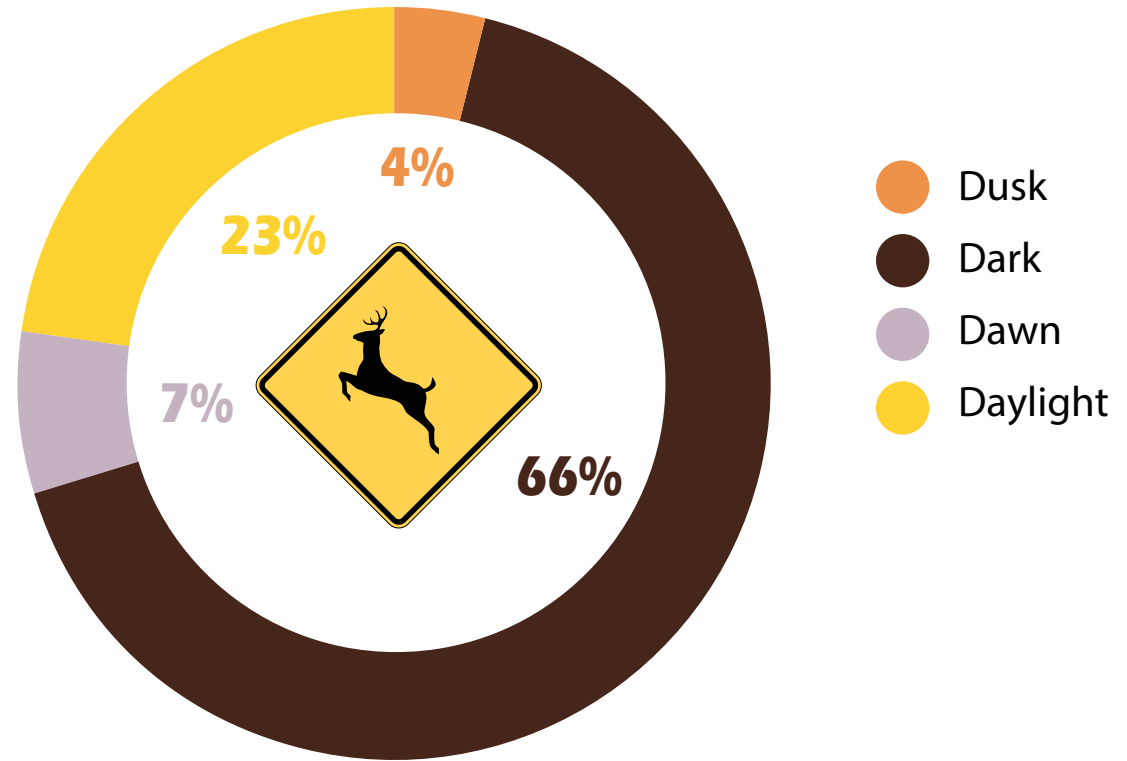
Maine Deer and Moose Crashes by County (2006-2015)

COUNTY	DEER CRASHES	MOOSE CRASHES
Androscoggin	1,807	55
Aroostook	1,704	1,774
Cumberland	4,724	138
Franklin	1,121	460
Hancock	2,569	83
Kennebec	3,339	126
Knox	893	22
Lincoln	639	23
Oxford	1,616	332
Penobscot	4,566	626
Piscataquis	833	176
Sagadahoc	822	10
Somerset	2,166	300
Waldo	1,688	44
Washington	1,374	234
York	3,061	153
TOTAL	32,922	4,556

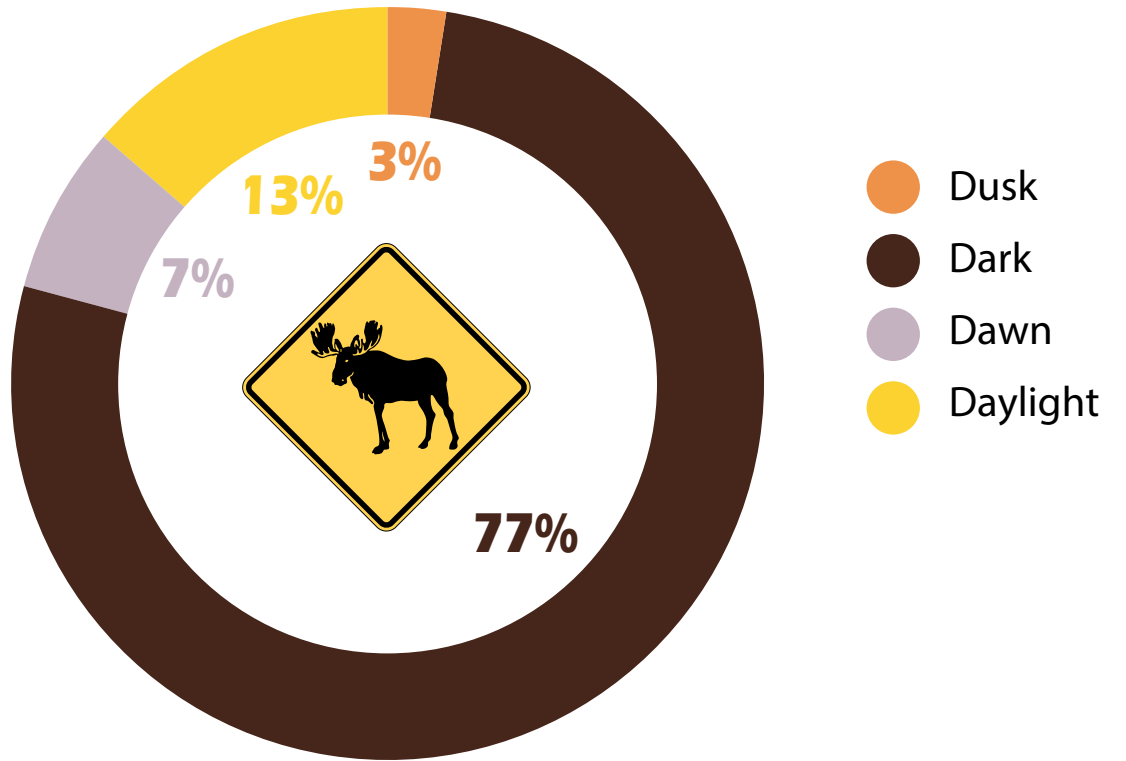
Deer and Moose Crashes by Month (2006-2015)



Deer Crashes by Light Conditions (2006-2015)



Moose Crashes by Light Conditions (2006-2015)





themtsc.org